

Appendix

1. Statistics

Table 1. Applications for Three Kinds of Patents Received from Home and Abroad, 2003–2010

	Total				Domestic				Abroad			
	Total	Invention	Utility Model	Design	Sub-total	Invention	Utility Model	Design	Sub-total	Invention	Utility Model	Design
Accumulated Total	5433189	1860017	1650389	1922783	4674597	1208159	1637545	1828893	758592	651858	12844	93890
Average Growth Rate (%)	21.7%	20.6%	20.8%	23.9%	23.6%	26.4%	20.9%	24.8%	10.2%	10.6%	10.7%	7.3%
2003	308487	105318	109115	94054	251238	56769	107842	86627	57249	48549	1273	7427
	22.1%	31.3%	17.2%	18.7%	22.2%	42.6%	17.0%	17.7%	21.6%	20.1%	30.8%	30.6%
2004	353807	130133	112825	110849	278943	65786	111578	101579	74864	64347	1247	9270
	14.7%	23.6%	3.4%	17.9%	11.0%	15.9%	3.5%	17.3%	30.8%	32.5%	-2.0%	24.8%
2005	476264	173327	139566	163371	383157	93485	138085	151587	93107	79842	1481	11784
	34.6%	33.2%	23.7%	47.4%	37.4%	42.1%	23.8%	49.2%	24.4%	24.1%	18.8%	27.1%
2006	573178	210490	161366	201322	470342	122318	159997	188027	102836	88172	1369	13295
	20.3%	21.4%	15.6%	23.2%	22.8%	30.8%	15.9%	24.0%	10.4%	10.4%	-7.6%	12.8%
2007	694153	245161	181324	267668	586734	153060	179999	253675	107419	92101	1325	13993
	21.1%	16.5%	12.4%	33.0%	24.7%	25.1%	12.5%	34.9%	4.5%	4.5%	-3.2%	5.3%
2008	828328	289838	225586	312904	717144	194579	223945	298620	111184	95259	1641	14284
	19.3%	18.2%	24.4%	16.9%	22.2%	27.1%	24.4%	17.7%	3.5%	3.4%	23.8%	2.1%
2009	976686	314573	310771	351342	877611	229096	308861	339654	99075	85477	1910	11688
	17.9%	8.5%	37.8%	12.3%	22.4%	17.7%	37.9%	13.7%	-10.9%	-10.3%	16.4%	-18.2%
2010	1222286	391177	409836	421273	1109428	293066	407238	409124	112858	98111	2598	12149
	25.1%	24.4%	31.9%	19.9%	26.4%	27.9%	31.9%	20.5%	13.9%	14.8%	36.0%	3.9%



Table 2. Domestic Applications for Three Kinds of Patents According to Service and Non-Service, 2003–2010

	Non-Service	Service				
		Sub-total	Colleges and Universities	Scientific Research Institutions	Enterprises	Organizations
Accumulated Total	2316297	2358300	284856	114295	1921825	37324
Average Growth Rate(%)	17.2%	30.4%	34.0%	21.3%	30.4%	41.3%
2003	148782	102456	10252	6998	84117	1089
	19.7%	26.1%	71.4%	30.2%	22.0%	17.6%
2004	167663	111280	12997	6709	90148	1426
	12.7%	8.6%	26.8%	-4.1%	7.2%	30.9%
2005	224275	158882	19921	9746	127397	1818
	33.8%	42.8%	53.3%	45.3%	41.3%	27.5%
2006	266776	203566	22950	9878	166874	3864
	19.0%	28.1%	15.2%	1.4%	31.0%	112.5%
2007	310625	276109	32680	14119	223480	5830
	16.4%	35.6%	42.4%	42.9%	33.9%	50.9%
2008	352758	364386	45145	18612	295510	5119
	13.6%	32.0%	38.1%	31.8%	32.2%	-12.2%
2009	394560	483051	61579	21271	394299	5902
	11.9%	32.6%	36.4%	14.3%	33.4%	15.3%
2010	450858	658570	79332	26962	540000	12276
	14.3%	36.3%	28.8%	26.8%	37.0%	108.0%

Table 3. Three Kinds of Patents Granted for Home and Abroad, 2003–2010

	Total				Domestic				Abroad			
	Total	Invention	Utility Model	Design	Sub-total	Invention	Utility Model	Design	Sub-total	Invention	Utility Model	Design
Accumulated Total	3015050	622858	1201518	1190674	2592839	299120	1190688	1103031	422211	323738	10830	87643
Average Growth Rate (%)	23.9%	20.3%	25.8%	23.6%	25.7%	32.0%	25.9%	24.2%	12.4%	11.5%	20.1%	15.0%
2003	182226	37154	68906	76166	149588	11404	68291	69893	32638	25750	615	6273
	37.6%	73.0%	19.9%	42.5%	33.4%	94.3%	19.6%	42.2%	60.8%	65.0%	56.9%	45.9%
2004	190238	49360	70623	70255	151328	18241	70019	63068	38910	31119	604	7187
	4.4%	32.9%	2.5%	-7.8%	1.2%	60.0%	2.5%	-9.8%	19.2%	20.9%	-1.8%	14.6%
2005	214003	53305	79349	81349	171619	20705	78137	72777	42384	32600	1212	8572
	12.5%	8.0%	12.4%	15.8%	13.4%	13.5%	11.6%	15.4%	8.9%	4.8%	100.7%	19.3%
2006	268002	57786	107655	102561	223860	25077	106312	92471	44142	32709	1343	10090
	25.2%	8.4%	35.7%	26.1%	30.4%	21.1%	36.1%	27.1%	4.1%	0.3%	10.8%	17.7%
2007	351782	67948	150036	133798	301632	31945	148391	121296	50150	36003	1645	12502
	31.3%	17.6%	39.4%	30.5%	34.7%	27.4%	39.6%	31.2%	13.6%	10.1%	22.5%	23.9%
2008	411982	93706	176675	141601	352406	46590	175169	130647	59576	47116	1506	10954
	17.1%	37.9%	17.8%	5.8%	16.8%	45.8%	18.0%	7.7%	18.8%	30.9%	-8.4%	-12.4%
2009	581992	128489	203802	249701	501786	65391	202113	234282	80206	63098	1689	15419
	41.3%	37.1%	15.4%	76.3%	42.4%	40.4%	15.4%	79.3%	34.6%	33.9%	12.2%	40.8%
2010	814825	135110	344472	335243	740620	79767	342256	318597	74205	55343	2216	16646
	40.0%	5.2%	69.0%	34.3%	47.6%	22.0%	69.3%	36.0%	-7.5%	-12.3%	31.2%	8.0%

Table 4. Applications for Three Kinds of Patents Received from Home, 1985–2010

Region	Accumulated Total	1985–2005	2006	2007	2008	2009	2010
Total	6000460	2239437	470342	586498	717144	877611	1109428
Beijing	376163	166888	26555	31680	43508	50236	57296
Tianjin	149311	56441	13299	15744	18230	19624	25973
Hebei	109956	62099	7220	7853	9128	11361	12295
Shanxi	47768	21476	2824	3333	5386	6822	7927
Inner Mongolia	26905	15327	1946	2015	2221	2484	2912
Liaoning	241042	123560	17052	19518	20893	25803	34216
Jilin	67225	39481	4578	5251	5536	5934	6445
Heilongjiang	96161	55127	6535	7242	7974	9014	10269
Shanghai	421557	152038	36042	47205	52835	62241	71196
Jiangsu	836830	156409	53267	88950	128002	174329	235873
Zhejiang	620170	179102	52980	68933	89931	108482	120742
Anhui	112227	27555	4679	6070	10409	16386	47128
Fujian	135032	60606	10351	11341	13181	17559	21994
Jiangxi	47575	25579	3171	3548	3746	5224	6307
Shandong	447880	154787	38284	46849	60247	66857	80856
Henan	150366	60084	11538	14916	19090	19589	25149
Hubei	174281	62665	14576	17376	21147	27206	31311
Hunan	145511	71684	10249	11233	14016	15948	22381
Guangdong	909759	333961	90886	102449	103883	125673	152907
Guangxi	45556	26014	2784	3480	3884	4277	5117
Chongqing	89293	31476	6471	6715	8324	13482	22825
Sichuang	202439	72553	13109	19165	24335	33047	40230
Guizhou	31486	14987	2674	2759	2943	3709	4414
Yunnan	43247	22687	3085	3108	4089	4633	5645
Tibet	1247	354	89	97	350	195	162

Continued

Region	Accumulated Total	1985-2005	2006	2007	2008	2009	2010
Shaanxi	103090	38457	5717	8499	11898	15570	22949
Gansu	23715	12235	1460	1608	2178	2676	3558
Qinghai	4729	2485	325	387	431	499	602
Ningxia	9311	4699	671	838	1087	1277	739
Xinjiang	28643	15273	2256	2270	2412	2872	3560
Hainan	9265	5163	538	632	873	1040	1019
Hong Kong	31508	18446	2623	2562	2486	2411	2980
Macao	337	194	12	39	22	38	32
Taiwan	260875	149545	22496	22833	22469	21113	22419
(Guangzhou)	137240	61610	12293	12054	13968	16514	20801
(Changchun)	28910	11570	2680	3418	3454	3550	4238
(Wuhan)	88372	30318	8125	9014	11270	14600	15045
(Nanjing)	77919	17908	6793	8030	11692	14221	19275
(Hangzhou)	122227	23840	10715	13284	18513	26074	29801
(Xi'an)	74590	21809	4172	6768	9584	12772	19485
(Jinan)	76689	18693	8219	8961	11572	13701	15543
(Shenyang)	80050	46795	4337	4905	6254	7708	10051
(Chengdu)	124252	24079	9024	14591	19167	26130	31261
(Dalian)	76578	24103	7104	8494	8095	11340	17442
(Xiamen)	30509	10718	2966	3050	3336	4914	5525
(Harbin)	49511	24476	3740	4293	4951	5525	6526
(Shenzhen)	262051	68557	29728	35808	36249	42279	49430
(Qingdao)	68475	25771	7830	7016	8369	8754	10735
(Ningbo)	104774	16333	10413	12787	16156	22686	26399
(XPCC)	1064				320	314	430

Table 5. Applications for Three Kinds of Patents Received from Home in 2010

Region	Total	Invention	Utility Model	Design
Total	1109428	293066	407238	409124
Beijing	57296	33466	18637	5193
Tianjin	25973	7347	11064	7562
Hebei	12295	3270	7089	1936
Shanxi	7927	3046	3533	1348
Inner Mongolia	2912	932	1406	574
Liaoning	34216	9884	14994	9338
Jilin	6445	2789	2993	663
Heilongjiang	10269	4070	4815	1384
Shanghai	71196	26165	23188	21843
Jiangsu	235873	50298	51436	134139
Zhejiang	120742	18027	50231	52484
Anhui	47128	6396	17367	23365
Fujian	21994	5117	10846	6031
Jiangxi	6307	1968	2947	1392
Shandong	80856	17259	43441	20156
Henan	25149	6408	13856	4885
Hubei	31311	7411	12791	11109
Hunan	22381	6438	9601	6342
Guangdong	152907	40866	47706	64335
Guangxi	5117	1574	2512	1031
Chongqing	22825	5150	11985	5690
Sichuan	40230	8342	16671	15217
Guizhou	4414	1322	2441	651
Yunnan	5645	2333	2212	1100
Tibet	162	76	33	53
Shaanxi	22949	8138	7939	6872
Gansu	3558	1412	1592	554
Qinghai	602	193	129	280
Ningxia	739	268	397	74
Xinjiang	3560	914	2272	374

Continued

Region	Total	Invention	Utility Model	Design
Hainan	1019	572	312	135
Hong Kong	2980	788	818	1374
Macao	32	14	11	7
Taiwan	22419	10813	9973	1633
(Guangzhou)	20801	6503	7140	7158
(Changchun)	4238	2083	1777	378
(Wuhan)	15045	4660	6785	3600
(Nanjing)	19275	7461	5647	6167
(Hangzhou)	29801	7782	13147	8872
(Xi'an)	19485	7176	6325	5984
(Jinan)	15543	3433	9180	2930
(Shenyang)	10051	3875	3681	2495
(Chengdu)	31261	5875	12294	13092
(Dalian)	17442	4043	7200	6199
(Xiamen)	5525	1447	2639	1439
(Harbin)	6526	3257	2303	966
(Shenzhen)	49430	23956	15117	10357
(Qingdao)	10735	2850	4971	2914
(Ningbo)	26399	2859	11492	12048
(XPCC)	430	133	277	20

Table 6. Distribution of Foreign Applications for Patents Received from 1985 to 2010

Countries and Regions	Accumulated Total	1985-2005	2006	2007	2008	2009	2010
Total	1037114	503742	102836	107419	111184	99075	112858
Algeria	4	2				1	1
Afghanistan	8					2	6
Argentina	99	52	10	5	15	5	12
United Arab Emirates	142	13	51	56	3	12	7
Aruba	1	1					
Oman	3			3			
Azerbaijan	2			1			1
Egypt	27	9	7	7	2	1	1
Ireland	1166	410	121	139	168	171	157
Estonia	26	7	2	1	3	6	7
Andorra	11	4		2		4	1
Anguilla The Valley	2				1	1	
Antigua and Barbuda	8	3		3		1	1
Austria	4206	2065	309	422	447	413	550
Australia	8480	4505	753	816	864	720	822
Barbados	415	87	56	52	57	79	84
Bahamas	196	111	17	13	11	26	18
Pakistan	10	5	1		3	1	
Paraguay	1				1		
Bahrain Island	3	3					
Panama	281	208	25	15	16	11	6
Brazil	1021	447	77	88	122	121	166
Belarus	28	13	5	3	1	6	
Bermuda	566	132	50	73	112	116	83
Bulgaria	80	57	6	2	9	1	5
Belgium	4702	1987	465	562	561	516	611
Iceland	147	46	10	14	24	28	25
Puerto Rico	6	1	1		4		
Poland	267	121	13	33	26	24	50

Continued

Countries and Regions	Accumulated Total	1985-2005	2006	2007	2008	2009	2010
Bolivia	1				1		
Belize	38	3	2	7	7	18	1
Burundi	1				1		
DPRK	19	9	1	4	3	1	1
Denmark	6501	2945	558	637	765	739	857
Germany	92878	43678	8676	9388	10145	9694	11297
Dominican Republic	2	1		1			
Dominica	3	1	2				
Russia	1583	1044	85	78	107	122	147
Ecuador	7	4	2			1	
France	38447	19664	3614	3697	3854	3624	3994
Vatican	2	2					
Philippine	73	45	2	5	8	8	5
Fiji	10			10			
Finland	10803	5285	988	1065	1201	1049	1215
Malvinas Islands (Falkland Islands)	1	1					
Colombia	40	14	2	2	8	8	6
Costa Rica	3	3					
Grenada	1					1	
Georgia	8	3	2			3	
Cuba	131	76	8	10	23	7	7
Kazakhstan	22	9	1	2	3	3	4
Haiti	1			1			
The Republic of Korea	83787	38375	10596	9601	9320	7113	8782
Netherlands	35771	17965	3721	3760	3624	3372	3329
Netherlands Antilles	294	151	54	29	28	16	16
Honduras	1					1	
Kyrgyzstan	4	1	1		1		1
Canada	9032	4116	821	953	1016	989	1137
Czech Republic	553	125	70	127	96	67	68

Continued

Countries and Regions	Accumulated Total	1985-2005	2006	2007	2008	2009	2010
Czechoslovakia	72	72					
Zimbabwe	8	8					
Cameroon	2	1	1				
Cayman Islands	1368	170	167	163	184	331	353
Kuwait	11	7	2			1	1
Croatia	121	82	12	12	6	6	3
Kenya							
The Cook Islands	10	3	2			3	2
Latvia	36	6	7	1	6	7	9
Lesotho	1	1					
Lebanon	9	7		1			1
Lithuania	5	2		1			2
Liberia	3	3					
Liechtenstein	1235	640	85	109	207	111	83
Luxemburg	915	411	69	98	100	101	136
Romania	22	12	1	4	2	1	2
Madagascar	2	2					
Maldives	2	2					
Malta	61	11	3	7	3	21	16
Malawi	2	2					
Malaysia	894	362	76	84	129	114	129
Mali	10	7					3
Marshall Islands	4			1	1		2
Mauritius	111	39	11	12	25	15	9
Unite States	250577	120254	23494	25908	27656	24629	28636
Mongolia	1				1		
Bangladesh	3		2				1
Peru	5	3					2
Moldova	2			1			1
Morocco	15	5	3	4	1		2
Monaco	112	63	12	7	19	4	7
Mexico	286	89	26	27	67	23	54
Namibia	2		1		1		

Continued

Countries and Regions	Accumulated Total	1985-2005	2006	2007	2008	2009	2010
South Africa	967	500	85	82	102	99	99
Yugoslavia	39	33	2	2	2		
Niger	1	1					
Nigeria	8	4	1			1	2
Norway	2263	1143	184	248	216	211	261
Portugal	185	51	15	39	27	21	32
Japan	372763	185697	37848	38188	38408	34381	38241
Sweden	17205	8079	1492	1726	2068	1844	1996
Switzerland	28076	14186	2370	2800	2830	2823	3067
El Salvador	1	1					
Samoa	138	35	12	28	29	8	26
Serbia	4						4
Serbia and Montenegro	2	2					
Senegal	2	1			1		
Cyprus	179	69	23	9	32	17	29
Seychelles	37	3	3	5	8	12	6
Saudi Arabia	473	57	218	55	71	34	38
Saint Kitts and Nevis	3	2			1		
San Marino	16	6	2		6	1	1
Saint Vincent and the Grenadines	3	2					1
Sri Lanka	47	45	1	1			
Slovak	56	15	6	9	13	7	6
Slovenia	202	83	17	14	29	22	37
Swaziland	1	1					
Sudan	1	1					
Thailand	511	335	44	38	27	36	31
Trinidad and Tobago	5	2				1	2
Tunisia	8	1		3	1	3	
Turkey	502	123	36	82	114	70	77
Vanuatu	12	11	1				
Guatemala	1					1	

Continued

Countries and Regions	Accumulated Total	1985-2005	2006	2007	2008	2009	2010
Virgin Islands	2328	776	260	303	367	241	381
Venezuela	47	37		3	1	2	4
Brunei Darussalam	69	5	14	11	4	15	20
Uganda	2			2			
Ukraine	77	50	5	8	5	3	6
Uruguay	17	12	1		1		3
Uzbekistan	5	5					
Spain	3750	1452	391	520	491	416	480
Western Sahara	1	1					
Greece	186	87	23	21	24	16	15
Singapore	2959	1022	417	416	363	304	437
New Zealand	1051	477	96	118	141	92	127
Hungary	767	552	45	51	43	40	36
Syria	3	1				2	
Armenia	4	1		1	1		1
Yemen	3					3	
Iraq	2	1					1
Iran	16	2	1		5	2	6
Israel	3564	1457	338	428	464	366	511
Italy	16204	7842	1699	1852	1761	1423	1627
India	1667	777	183	175	197	146	189
Indonesia	168	79	16	23	8	23	19
United Kingdom	22547	12491	1813	2012	2233	1911	2087
Jordan	16	6		6	2	1	1
Vietnam	17	3	5	2	2	1	4
Zambia	2	2					
Jersey Island	7	7					
Gibraltar	14	11	1			2	
Chile	76	22	9	11	17	5	12
Central African Republic	2	2					

Table 7. Three Kinds of Patents Granted for Home, 1985–2010

Region	Accumulated Total	1985–2005	2006	2007	2008	2009	2010
Total	3384472	1264168	223860	301632	352406	501786	740620
Beijing	188545	88174	11238	14954	17747	22921	33511
Tianjin	60022	25079	4159	5584	6790	7404	11006
Hebei	69199	37314	4131	5358	5496	6839	10061
Shanxi	26563	12892	1421	1992	2279	3227	4752
Inner Mongolia	15854	8645	978	1313	1328	1494	2096
Liaoning	120530	63560	7399	9615	10665	12198	17093
Jilin	36306	20530	2319	2855	2984	3275	4343
Heilongjiang	53853	29495	3622	4303	4574	5079	6780
Shanghai	225052	76373	16602	24481	24468	34913	48215
Jiangsu	407384	86156	19352	31770	44438	87286	138382
Zhejiang	425334	104756	30968	42069	52953	79945	114643
Anhui	50983	16383	2235	3413	4346	8594	16012
Fujian	88887	37432	6412	7761	7937	11282	18063
Jiangxi	26314	13150	1536	2069	2295	2915	4349
Shandong	235052	83603	15937	22821	26688	34513	51490
Henan	81729	32392	5242	6998	9133	11425	16539
Hubei	77641	29198	4734	6616	8374	11357	17362
Hunan	76061	36451	5608	5687	6133	8309	13873
Guangdong	574411	209449	43516	56451	62031	83621	119343
Guangxi	26335	14409	1442	1907	2228	2702	3647
Chongqing	52493	18508	4590	4994	4820	7501	12080
Sichuang	124358	41572	7138	9935	13369	20132	32212
Guizhou	17586	7624	1337	1727	1728	2084	3086
Yunnan	26676	14133	1637	2139	2021	2923	3823
Tibet	835	177	81	68	93	292	124
Shaanxi	48326	21889	2473	3451	4392	6087	10034
Gansu	12305	6259	832	1025	1047	1274	1868
Qinghai	2485	1306	97	222	228	368	264
Ningxia	5907	2724	290	296	606	910	1081

Continued

Region	Accumulated Total	1985-2005	2006	2007	2008	2009	2010
Xinjiang	17024	8382	1187	1534	1493	1866	2562
Hainan	5040	2811	248	296	341	630	714
Hong Kong	25020	14290	1881	2106	1892	2250	2601
Macao	205	102	15	16	23	15	34
Taiwan	180157	98950	13203	15806	17466	16155	18577
(Guangzhou)	85999	36845	6389	8526	8078	11082	15079
(Changchun)	14190	4853	1304	1666	1814	1931	2622
(Wuhan)	43155	13909	2855	4044	5329	6853	10165
(Nanjing)	35343	8060	2890	3787	4816	6640	9150
(Hangzhou)	75746	10777	5728	7564	9706	15465	26506
(Xi'an)	31982	11653	1772	2529	3285	4706	8037
(Jinan)	35377	7604	3108	4114	4567	6389	9595
(Shenyang)	41515	24247	2514	2848	3105	3636	5165
(Chengdu)	76859	11815	5133	7239	10342	16349	25981
(Dalian)	28655	9427	2118	2957	3507	4447	6199
(Xiamen)	21454	6706	1990	2402	2330	2986	5040
(Harbin)	25334	12040	1846	2282	2400	2792	3974
(Shenzhen)	139063	32367	11494	15552	18805	25894	34951
(Qingdao)	36747	15498	3115	3595	3311	4432	6796
(Ningbo)	76171	9593	6056	8845	9882	15824	25971
(XPCC)	604				153	211	240

Table 8. Three Kinds of Patent Granted for Home in 2010

Region	Total	Invention	Utility Model	Design
Total	740620	79767	342256	318597
Beijing	33511	11209	16579	5723
Tianjin	11006	1930	6718	2358
Hebei	10061	954	6838	2269
Shanxi	4752	739	3096	917
Inner Mongolia	2096	262	1276	558
Liaoning	17093	2357	12067	2669
Jilin	4343	785	2806	752
Heilongjiang	6780	1512	4391	877
Shanghai	48215	6867	21821	19527
Jiangsu	138382	7210	41161	90011
Zhejiang	114643	6410	47617	60616
Anhui	16012	1111	8839	6062
Fujian	18063	1224	9664	7175
Jiangxi	4349	411	2588	1350
Shandong	51490	4106	36391	10993
Henan	16539	1498	11048	3993
Hubei	17362	2025	10431	4906
Hunan	13873	1920	7861	4092
Guangdong	119343	13691	43900	61752
Guangxi	3647	426	2167	1054
Chongqing	12080	1143	6704	4233
Sichuan	32212	2204	12724	17284
Guizhou	3086	441	1936	709
Yunnan	3823	652	2026	1145

Continued

Region	Total	Invention	Utility Model	Design
Tibet	124	16	49	59
Shaanxi	10034	1887	6093	2054
Gansu	1868	349	1131	388
Qinghai	264	41	134	89
Ningxia	1081	61	307	713
Xinjiang	2562	189	2012	361
Hainan	714	190	305	219
Hong Kong	2601	310	743	1548
Macao	34	5	21	8
Taiwan	18577	5632	10812	2133
(Guangzhou)	15079	1988	6151	6940
(Changchun)	2622	613	1593	416
(Wuhan)	10165	1731	6161	2273
(Nanjing)	9150	2487	4566	2097
(Hangzhou)	26506	3238	11904	11364
(Xi'an)	8037	1651	4795	1591
(Jinan)	9595	1258	7200	1137
(Shenyang)	5165	1010	3137	1018
(Chengdu)	25981	1657	9559	14765
(Dalian)	6199	752	4494	953
(Xiamen)	5040	449	2748	1843
(Harbin)	3974	1326	2193	455
(Shenzhen)	34951	9615	14266	11070
(Qingdao)	6796	765	4305	1726
(Ningbo)	25971	1209	11230	13532
(XPCC)	240	19	192	29

Table 9. Patents Granted for Foreign Applications, 1985–2010

Countries and Regions	Accumulated Total	1985–2005	2006	2007	2008	2009	2010
Total	512887	204608	44142	50150	59576	80206	74205
Algeria	1						1
Afghanistan	7						7
Argentina	29	9		3	2	9	6
United Arab Emirates	119	5	2	64	35	9	4
Oman	1						1
Egypt	9	2	3	1	1	1	1
Ireland	413	139	30	62	48	56	78
Estonia	10	2	2			2	4
Andorra	4	1			1	1	1
Antigua and Barbuda	5					2	3
Austria	2145	1041	141	179	216	294	274
Australia	4206	1783	360	431	451	577	604
Barbados	98	12	5	5	12	20	44
Bahamas	107	49	12	6	10	11	19
Pakistan	6	4		1		1	
Paraguay	1					1	
Bahrain Island	1	1					
Panama	191	77	17	29	31	17	20
Brazil	478	186	37	42	39	80	94
Belarus	14	6		3	4	1	
Bermuda	165	37	16	13	25	17	57
Bulgaria	36	19	2	5	2	4	4
Belgium	1974	848	167	194	215	258	292
Iceland	43	17	1	2	7	6	10
Puerto Rico	2					2	
Poland	126	44	8	20	16	22	16
Belize	22	1			1	14	6
DPRK	6	3			1	1	1

Continued

Countries and Regions	Accumulated Total	1985-2005	2006	2007	2008	2009	2010
Denmark	3107	1328	265	317	308	423	466
Germany	43295	17890	3503	4064	4729	6658	6451
Dominican Republic	3	1	1				1
Russia	615	311	38	38	55	84	89
Ecuador	1	1					
France	19663	8591	1668	1861	1849	3004	2690
Philippine	44	21	1	2	3	9	8
Fiji	9				9		
Finland	5374	2390	388	433	559	852	752
Malvinas Islands (Falkland Islands)	1	1					
Colombia	20	2	2		8	8	
Costa Rica	1		1				
Georgia	4	1					3
Cuba	55	22	6	8	8	7	4
Kazakhstan	10	3	2		3		2
Haiti	1				1		
The Republic of Korea	42636	13717	3874	4373	5605	7950	7117
Netherlands	15603	6471	1329	1441	1662	2523	2177
Netherlands Antilles	173	75	21	26	21	19	11
Honduras	1						1
Kyrgyzstan	2				1		1
Canada	3720	1429	237	335	443	599	677
Gabon	2	2					
Czech Republic	426	38	68	109	68	81	62
Czechoslovakia	32	32					
Zimbabwe	4	3				1	
Cayman Islands	459	76	40	42	59	81	161
Kuwait	8	5	1			1	1
Croatia	56	28	5	12	5	3	3

Continued

Countries and Regions	Accumulated Total	1985-2005	2006	2007	2008	2009	2010
The Cook Islands	12	1	1	2	2	1	5
Latvia	10	1	2	4	1	1	1
Lesotho	1	1					
Lebanon	6	2	3		1		
Lithuania	2		2				
Liberia	3	3					
Liechtenstein	788	330	45	89	59	179	86
Luxemburg	471	223	25	32	48	69	74
Romania	11	5		1	2		3
Madagascar	2	2					
Maldives	1	1					
Malta	13	4	1	2	1	1	4
Malaysia	533	177	35	33	62	102	124
Mali	1			1			
Marshall Islands							
Mauritius	77	6	20	8	13	11	19
Unite States	102059	43205	7739	9709	11195	15273	14938
Mongolia	5	4				1	
Bangladesh	2			2			
Peru	1	1					
Morocco	8	3	1	3	1		
Monaco	67	39	2	4	5	15	2
Mexico	110	25	4	9	13	45	14
Namibia	1						1
South Africa	376	155	30	49	40	59	43
Yugoslavia	22	19	1		2		
Nigeria	5	2	1	1			1
Norway	1076	492	88	94	110	163	129
Portugal	61	16	6	3	16	14	6
Japan	211003	80564	19626	21123	26370	33804	29516
Sweden	8348	4056	515	678	724	1189	1186
Switzerland	14221	6825	1135	1290	1310	1729	1932

Continued

Countries and Regions	Accumulated Total	1985-2005	2006	2007	2008	2009	2010
El Salvador	1	1					
Samoa	70	25	8	7	8	18	4
Serbia	1						1
Senegal	1					1	
Cyprus	66	24	3	6	5	16	12
Seychelles	17	2			1	6	8
Saudi Arabia	348	20	112	104	41	51	20
San Marino	8	1	2	1		4	
Saint Vincent and the Grenadines	1	1					
Sri Lanka	28	26	1		1		
Slovak	36	6	5	1	8	13	3
Slovenia	83	31	11	3	8	12	18
Swaziland	1	1					
Thailand	357	224	12	40	19	21	41
Trinidad and Tobago	1		1				
Tunisia	3				2		1
Turkey	318	64	32	12	32	104	74
Vanuatu	4	2	1		1		
Virgin Islands	1189	435	131	151	163	130	179
Venezuela	33	24	5	2		1	1
Brunei Darussalam	47	3	2	9	2	12	19
Uganda	2			2			
Ukraine	38	19	6	2	1	4	6
Uruguay	8	3	1	2	1		1
Uzbekistan	3	3					
Spain	1849	605	222	239	254	232	297
Greece	76	27	3	3	12	13	18
Singapore	1432	475	115	123	140	234	345
New Zealand	466	170	31	32	55	92	86
Hungary	290	208	15	15	23	14	15

Continued

Countries and Regions	Accumulated Total	1985–2005	2006	2007	2008	2009	2010
Syria	3		1				2
Armenia	2	1					1
Yemen	3						3
Iraq	1						1
Iran	4				1	1	2
Israel	1165	415	70	139	185	188	168
Italy	8879	3421	878	983	1003	1291	1303
India	673	258	59	72	105	102	77
Indonesia	120	46	15	18	13	5	23
United Kingdom	10369	5159	862	918	1000	1266	1164
Jordan	8	3	1			3	1
Vietnam	6	1	1	4			
Jersey Island	4	3			1		
Gibraltar	10	6	1	1	1	1	
Chile	21	7		3	2	6	3
Central African Republic	2	2					

Table 10. Valid Patents of Domestic Origin (By the end of 2010)

Region	Total	Invention	Utility Model	Design
Total	1825403	257893	849454	718056
Beijing	100623	38996	46830	14797
Tianjin	29672	6516	17341	5815
Hebei	27472	3122	18375	5975
Shanxi	11998	2473	7460	2065
Inner Mongolia	5935	838	3367	1730
Liaoning	45241	8155	30790	6296
Jilin	13201	2954	7931	2316
Heilongjiang	21010	4362	14075	2573
Shanghai	126178	23843	57406	44929
Jiangsu	273249	19682	92315	161252
Zhejiang	268471	17955	105336	145180
Anhui	32460	2972	17357	12131
Fujian	44116	3295	22496	18325
Jiangxi	10931	1322	6315	3294
Shandong	111295	11080	73761	26454
Henan	39972	4501	25431	10040
Hubei	40580	6315	23873	10392
Hunan	32516	6289	17900	8327
Guangdong	325566	41891	125237	158438
Guangxi	10503	1332	6041	3130
Chongqing	30947	3136	15732	12079
Sichuang	66644	6533	26264	33847
Guizhou	8995	1616	5564	1815
Yunnan	11363	2344	5461	3558

Continued

Region	Total	Invention	Utility Model	Design
Tibet	529	60	112	357
Shaanxi	24158	5604	14325	4229
Gansu	5318	1143	3235	940
Qinghai	857	159	366	332
Ningxia	2790	256	1026	1508
Xinjiang	7225	665	5211	1349
Hainan	2097	446	918	733
Hong Kong	10071	1505	3007	5559
Macao	84	12	48	24
Taiwan	83336	26521	48548	8267
(Guangzhou)	44706	6469	18317	19920
(Changchun)	7876	2120	4530	1226
(Wuhan)	24969	5353	14424	5192
(Nanjing)	24138	7340	11692	5106
(Hangzhou)	57393	9493	24970	22930
(Xi' an)	18902	4759	10906	3237
(Jinan)	20394	3061	14547	2786
(Shenyang)	14508	3253	8806	2449
(Chengdu)	50705	4812	18056	27837
(Dalian)	14331	2699	9844	1788
(Xiamen)	13191	1318	7203	4670
(Harbin)	11361	3401	6473	1487
(Shenzhen)	102494	29221	42088	31185
(Qingdao)	18228	2239	10864	5125
(Ningbo)	60621	3137	24186	33298
(XPCC)	658	55	534	69

Table 11. Valid Patents of Foreign Origin (By the end of 2010)

Countries and Regions	Total	Invention	Utility Model	Design
Total	390679	306867	8514	75298
Algeria	1		1	
Afghanistan	7			7
Argentina	23	9	4	10
United Arab Emirates	10	1		9
Oman	1	1		
Egypt	5	1	2	2
Ireland	329	209	17	103
Estonia	7	3	2	2
Andorra	5	4		1
Antigua and Barbuda	6	3		3
Austria	1605	1311	43	251
Australia	2893	1829	98	966
Barbados	118	104		14
Bahamas	83	43	10	30
Pakistan	1			1
Paraguay	1			1
Bahrain Island	3	3		
Panama	157	147	3	7
Brazil	365	221	20	124
Bermuda	136	107	15	14
Bulgaria	13	5	1	7
Belgium	1473	1246	8	219
Iceland	33	33		
Puerto Rico	2			2
Poland	81	44	4	33
Bosnia and Herzegovina	2	2		
Belize	21	1	18	2
DPRK	3	2	1	

Continued

Countries and Regions	Total	Invention	Utility Model	Design
Denmark	2375	1627	64	684
Germany	33100	25629	628	6843
Dominican Republic	2	2		
Russia	354	242	66	46
Ecuador	1	1		
France	14329	10992	170	3167
Philippine	21	4	3	14
Fiji	6		5	1
Finland	4341	3514	41	786
Colombia	17	8	1	8
Costa Rica	1	1		
Georgia	3			3
Cuba	48	48		
Kazakhstan	8	6	2	
The Republic of Korea	32709	26583	622	5504
Netherlands	11146	9523	86	1537
Netherlands Antilles	104	102		2
Honduras	1			1
Kyrgyzstan	1	1		
Canada	2753	2179	101	473
Czech Republic	343	53	25	265
Zimbabwe	1	1		
Cayman Islands	651	170	166	315
Kuwait	5	4		1
Croatia	18	16		2
The Cook Islands	13	3		10
Latvia	8	5	3	
Lebanon	2		2	
Liechtenstein	561	281		280
Luxemburg	355	253	40	62
Romania	8	7	1	
Madagascar	2	2		

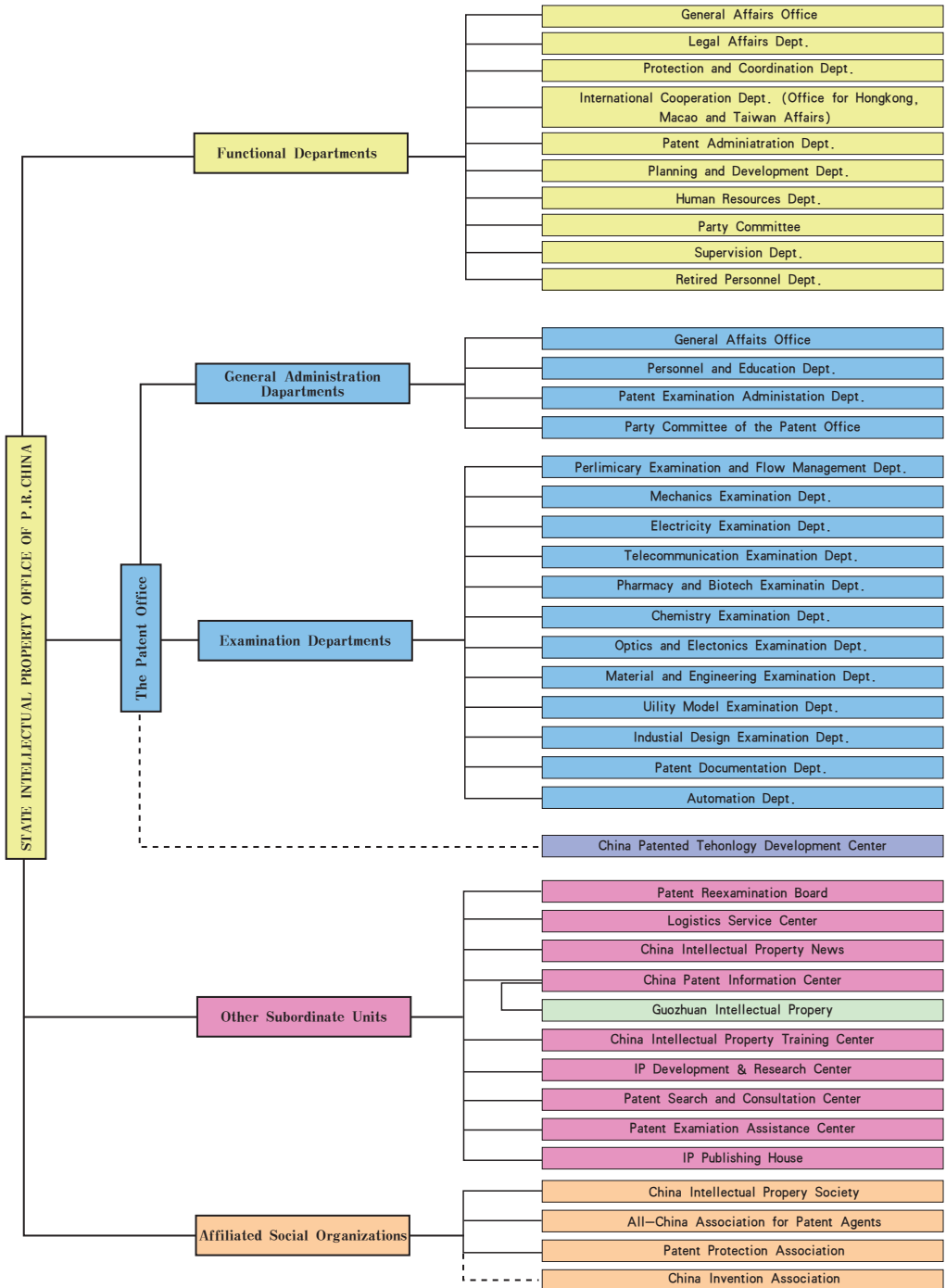
Continued

Countries and Regions	Total	Invention	Utility Model	Design
Malta	11	9		2
Malaysia	370	101	52	217
Mauritius	76	21	27	28
United States	73333	58053	2900	12380
Mongolia	1		1	
Morocco	4	1	2	1
Monaco	40	28		12
Mexico	90	38	4	48
Namibia	1	1		
South Africa	280	245	13	22
Yugoslavia	3	3		
Nigeria	3			3
Norway	786	654	2	130
Portugal	52	32	1	19
Japan	168624	135710	2240	30674
Sweden	6724	5589	98	1037
Switzerland	10295	7807	141	2347
El Salvador	1	1		
Samoa	40	3	29	8
Serbia	1		1	
Senegal	1			1
Cyprus	62	56	3	3
Seychelles	25	17	3	5
Saudi Arabia	153	60	3	90
Saint Kitts and Nevis	2	2		
San Marino	8	2	3	3
Saint Vincent and the Grenadines	1	1		
Sri Lanka	1		1	
Slovak	37	13	1	23
Slovenia	66	48		18
Thailand	126	29	25	72

Continued

Countries and Regions	Total	Invention	Utility Model	Design
Tonga	1			1
Tunisia	1	1		
Turkey	270	74	19	177
Vanuatu	1	1		
Virgin Islands	906	328	161	417
Venezuela	23	18		5
Brunei Darussalam	49	16	16	17
Uganda	2			2
Ukraine	23	19	4	
Uruguay	4	3	1	
Uzbekistan	1	1		
Spain	1201	517	57	627
Greece	54	41	1	12
Singapore	1204	819	86	299
New Zealand	313	199	13	101
Hungary	109	94	4	11
Syria	2			2
Armenia	2	1		1
Yemen	3			3
Iraq	2		1	1
Iran	4	1	1	2
Israel	843	701	7	135
Italy	6435	3689	147	2599
India	454	357	6	91
Indonesia	62	8	3	51
United Kingdom	6788	4846	159	1783
Jordan	3		2	1
Vietnam	1			1
Jersey Island	3	3		
Gibraltar	9	9		
Chile	17	11	3	3
Central African Republic	1			1

2. Organization Chart



Chief Editor: Li Yuguang
Deputy Chief Editor: Wang Xiaohui
Executive Editor: Yan Xiaowei Sheng Li
Editor: Fan Hongyan Chen Jianghua Hu An
Contributing Editor: Chen Jianghua Fu Mingxing Jia Zheng Li Fenlian Liu Lei
Liu Ning Lu Huisheng Ma Huan Ma Ning Sha Kaiqing
Tang Junfeng Wang Yanhong Xu Xiaomin Yang Fei Yang Huimin
Yang Niya Yang Zhe Zhang Li Zhao Yong
Photographer: Wang Wenyang Zhang Zihong Yang Shen
Printing: Electronic Plate-making & Printing Center, Intellectual Property Publishing House

ADD: P. O.Box 8020 / No.6 Xitucheng Road, Haidian District, Beijing, 100088, P. R. China
Tel: 86-10-62019485 / Fax: 86-10-62085201 / <http://www.sipo.gov.cn>