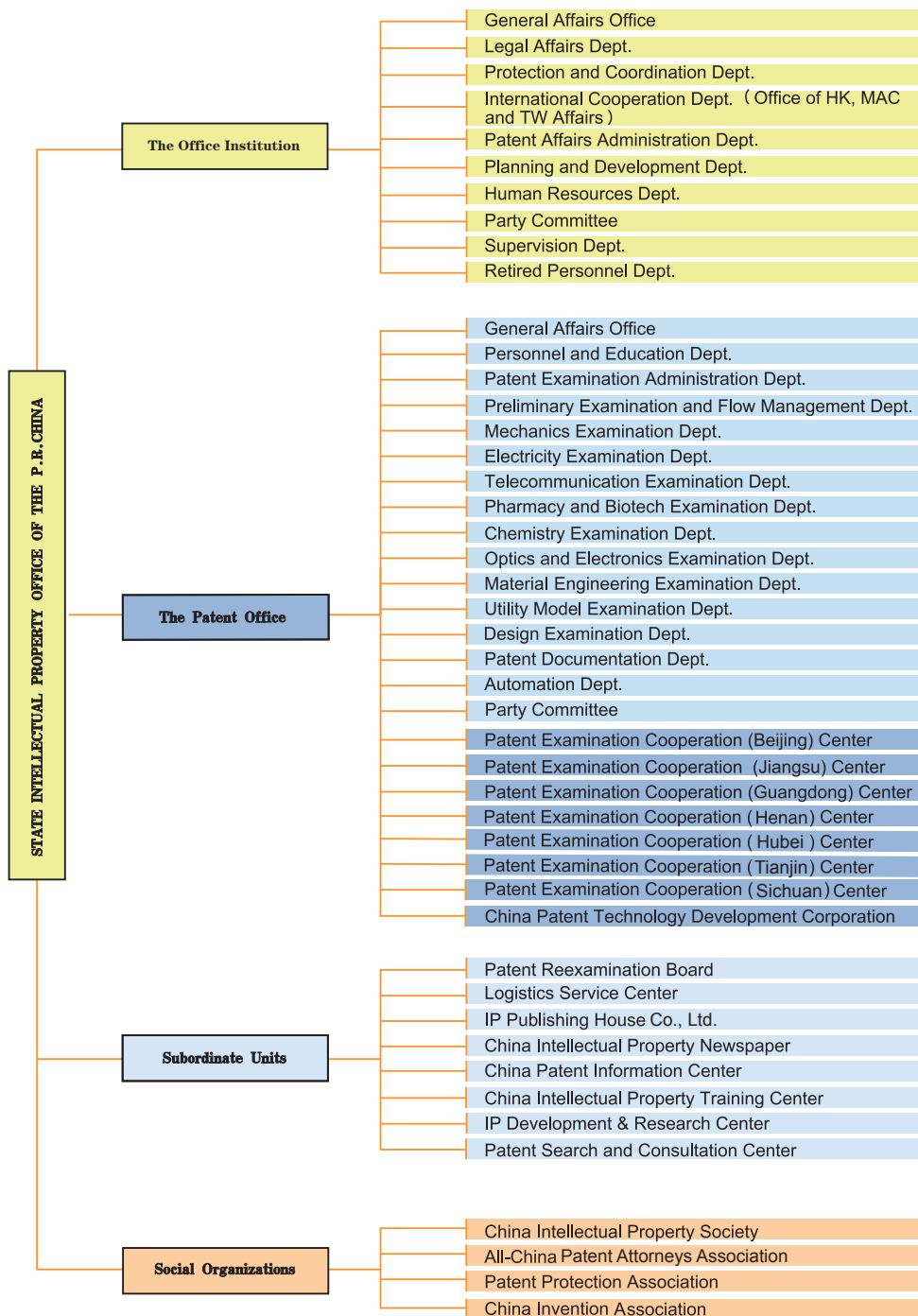


2. Organization Chart



Chief Editor: He Zhimin
Deputy Chief Editor: Wu Kai Liu Jian
Executive Editor: Sheng Li
Editor: Duan Hongmei Shi Longhui
Compiling Editor: Zhong Yan
Contributing Editor: Qiu Junchang Wang Yanhong Bai Qing Zhu Dan
Liu Lei Liu Wen He Xuwen Li Fenlian
Yang Fei Yang Niya Wu Yun Zhang Li
Zhao Yong Jing Guangwei Wei Jian
Photographer: Wang Wenyang Zhang Zihong Yang Shen Jiang Wenjie
Printing: Electronic Plate-making & Printing Center, Intellectual Property Publishing House

ADD: P. O.Box 8020 / No.6 Xitucheng Road, Haidian District, Beijing, 100088, P. R. China
Tel: 86-10-62083268 / Fax: 86-10-62019615 / <http://www.sipo.gov.cn>