

Appendix

1. Statistics

Table 1 Number of Invention Patents, Utility Models and Industrial Designs filed by Domestic and Foreign Applicants from 2003 to 2016

	Total				Domestic				Foreign			
	Grand Total	Invention Patent	Utility Model	Industrial Design	Subtotal	Invention Patent	Utility Model	Industrial Design	Subtotal	Invention Patent	Utility Model	Industrial Design
Accumulated Total	20118577	7232886	7340573	5545118	18481029	5838604	7287573	5354852	1637548	1394282	53000	190266
Average Growth Rate	20.6%	22.3%	21.8%	16.2%	21.9%	27.6%	21.9%	16.6%	9.1%	8.9%	15.9%	8.7%
2003	308487	105318	109115	94054	251238	56769	107842	86627	57249	48549	1273	7427
	22.1%	31.3%	17.2%	18.7%	22.2%	42.6%	17.0%	17.7%	21.6%	20.1%	30.8%	30.6%
2004	353807	130133	112825	110849	278943	65786	111578	101579	74864	64347	1247	9270
	14.7%	23.6%	3.4%	17.9%	11.0%	15.9%	3.5%	17.3%	30.8%	32.5%	-2.0%	24.8%
2005	476264	173327	139566	163371	383157	93485	138085	151587	93107	79842	1481	11784
	34.6%	33.2%	23.7%	47.4%	37.4%	42.1%	23.8%	49.2%	24.4%	24.1%	18.8%	27.1%
2006	573178	210490	161366	201322	470342	122318	159997	188027	102836	88172	1369	13295
	20.3%	21.4%	15.6%	23.2%	22.8%	30.8%	15.9%	24.0%	10.4%	10.4%	-7.6%	12.8%
2007	693917	245161	181324	267432	586498	153060	179999	253439	107419	92101	1325	13993
	21.1%	16.5%	12.4%	32.8%	24.7%	25.1%	12.5%	34.8%	4.5%	4.5%	-3.2%	5.3%
2008	828328	289838	225586	312904	717144	194579	223945	298620	111184	95259	1641	14284
	19.4%	18.2%	24.4%	17.0%	22.3%	27.1%	24.4%	17.8%	3.5%	3.4%	23.8%	2.1%
2009	976686	314573	310771	351342	877611	229096	308861	339654	99075	85477	1910	11688
	17.9%	8.5%	37.8%	12.3%	22.4%	17.7%	37.9%	13.7%	-10.9%	-10.3%	16.4%	-18.2%
2010	1222286	391177	409836	421273	1109428	293066	407238	409124	112858	98111	2598	12149
	25.1%	24.4%	31.9%	19.9%	26.4%	27.9%	31.9%	20.5%	13.9%	14.8%	36.0%	3.9%
2011	1633347	526412	585467	521468	1504670	415829	581303	507538	128677	110583	4164	13930
	33.6%	34.6%	42.9%	23.8%	35.6%	41.9%	42.7%	24.1%	14.0%	12.7%	60.3%	14.7%
2012	2050649	652777	740290	657582	1912151	535313	734437	642401	138498	117464	5853	15181
	25.5%	24.0%	26.4%	26.1%	27.1%	28.7%	26.3%	26.6%	7.6%	6.2%	40.6%	9.0%
2013	2377061	825136	892362	659563	2234560	704936	885226	644398	142501	120200	7136	15165
	15.9%	26.4%	20.5%	0.3%	16.9%	31.7%	20.5%	0.3%	2.9%	2.3%	21.9%	-0.1%
2014	2361243	928177	868511	564555	2210616	801135	861053	548428	150627	127042	7458	16127
	-0.7%	12.5%	-2.7%	-14.4%	-1.1%	13.6%	-2.7%	-14.9%	5.7%	5.7%	4.5%	6.3%
2015	2798500	1101864	1127577	569059	2639446	968251	1119714	551481	159054	133613	7863	17578
	18.5%	18.7%	29.8%	0.8%	19.4%	20.9%	30.0%	0.6%	5.6%	5.2%	5.4%	9.0%
2016	3464824	1338503	1475977	650344	3305225	1204981	1468295	631949	159599	133522	7682	18395
	23.8%	21.5%	30.9%	14.3%	25.2%	24.4%	31.1%	14.6%	0.3%	-0.1%	-2.3%	4.6%



Table 2 Statistics on Domestic Patent Applications on Service/Non-Service Inventions by Different Types of Institutions from 2003 to 2016

	Non-Service	Service Invention				
		Subtotal	Universities	Research Institutions	Factorites and Enterprises	Governmental Agencies and Organizations
Accumulated Total	6391484	12089781	1428941	448967	10005092	206781
Average Growth Rate	14.8%	27.5%	32.7%	21.1%	27.2%	32.5%
2003	148782	102456	10252	6998	84117	1089
	19.7%	26.1%	71.4%	30.2%	22.0%	17.6%
2004	167663	111280	12997	6709	90148	1426
	12.7%	8.6%	26.8%	-4.1%	7.2%	30.9%
2005	224275	158882	19921	9746	127397	1818
	33.8%	42.8%	53.3%	45.3%	41.3%	27.5%
2006	266776	203566	22950	9878	166874	3864
	19.0%	28.1%	15.2%	1.4%	31.0%	112.5%
2007	310625	276109	32680	14119	223480	5830
	16.4%	35.6%	42.4%	42.9%	33.9%	50.9%
2008	352758	364386	45145	18612	295510	5119
	13.6%	32.0%	38.1%	31.8%	32.2%	-12.2%
2009	394560	483051	61579	21271	394299	5902
	11.9%	32.6%	36.4%	14.3%	33.4%	15.3%
2010	450858	658570	79332	26962	540000	12276
	14.3%	36.3%	28.8%	26.8%	37.0%	108.0%
2011	542326	962344	110136	37910	799435	14863
	20.3%	46.1%	38.8%	40.6%	48.0%	21.1%
2012	618835	1293316	132648	45119	1097220	18329
	14.1%	34.4%	20.4%	19.0%	37.2%	23.3%
2013	679490	1555070	167656	53032	1310058	24324
	9.8%	20.2%	26.4%	17.5%	19.4%	32.7%
2014	637562	1573054	183969	55861	1306466	26758
	-6.2%	1.2%	9.7%	5.3%	-0.3%	10.0%
2015	736372	1903074	235162	64476	1565751	37685
	15.5%	21.0%	27.8%	15.4%	19.8%	40.8%
2016	860602	2444623	314514	78274	2004337	47498
	16.9%	28.5%	33.7%	21.4%	28.0%	26.0%

Table 3 Granted Domestic and Foreign Invention Patents, Utility Models and Industrial Designs from 2003 to 2016

	Total				Domestic				Foreign			
	Grand Total	Invention Patent	Utility Model	Industrial Design	Subtotal	Invention Patent	Utility Model	Industrial Design	Subtotal	Invention Patent	Utility Model	Industrial Design
Accumulated Total	11318343	2216516	5361168	3740659	10303599	1427101	5314472	3562026	1014744	789415	46696	178633
Average Growth Rate	20.3%	23.3%	21.7%	16.4%	21.1%	32.5%	21.7%	16.8%	13.9%	14.4%	22.1%	10.0%
2003	182226	37154	68906	76166	149588	11404	68291	69893	32638	25750	615	6273
	37.6%	73.0%	19.9%	42.5%	33.4%	94.3%	19.6%	42.2%	60.8%	65.0%	56.9%	45.9%
2004	190238	49360	70623	70255	151328	18241	70019	63068	38910	31119	604	7187
	4.4%	32.9%	2.5%	-7.8%	1.2%	60.0%	2.5%	-9.8%	19.2%	20.9%	-1.8%	14.6%
2005	214003	53305	79349	81349	171619	20705	78137	72777	42384	32600	1212	8572
	12.5%	8.0%	12.4%	15.8%	13.4%	13.5%	11.6%	15.4%	8.9%	4.8%	100.7%	19.3%
2006	268002	57786	107655	102561	223860	25077	106312	92471	44142	32709	1343	10090
	25.2%	8.4%	35.7%	26.1%	30.4%	21.1%	36.1%	27.1%	4.1%	0.3%	10.8%	17.7%
2007	351782	67948	150036	133798	301632	31945	148391	121296	50150	36003	1645	12502
	31.3%	17.6%	39.4%	30.5%	34.7%	27.4%	39.6%	31.2%	13.6%	10.1%	22.5%	23.9%
2008	411982	93706	176675	141601	352406	46590	175169	130647	59576	47116	1506	10954
	17.1%	37.9%	17.8%	5.8%	16.8%	45.8%	18.0%	7.7%	18.8%	30.9%	-8.4%	-12.4%
2009	581992	128489	203802	249701	501786	65391	202113	234282	80206	63098	1689	15419
	41.3%	37.1%	15.4%	76.3%	42.4%	40.4%	15.4%	79.3%	34.6%	33.9%	12.2%	40.8%
2010	814825	135110	344472	335243	740620	79767	342256	318597	74205	55343	2216	16646
	40.0%	5.2%	69.0%	34.3%	47.6%	22.0%	69.3%	36.0%	-7.5%	-12.3%	31.2%	8.0%
2011	960513	172113	408110	380290	883861	112347	405086	366428	76652	59766	3024	13862
	17.9%	27.4%	18.5%	13.4%	19.3%	40.8%	18.4%	15.0%	3.3%	8.0%	36.5%	-16.7%
2012	1255138	217105	571175	466858	1163226	143847	566750	452629	91912	73258	4425	14229
	30.7%	26.1%	40.0%	22.8%	31.6%	28.0%	39.9%	23.5%	19.9%	22.6%	46.3%	2.6%
2013	1313000	207688	692845	412467	1228413	143535	686208	398670	84587	64153	6637	13797
	4.6%	-4.3%	21.3%	-11.7%	5.6%	-0.2%	21.1%	-11.9%	-8.0%	-12.4%	50.0%	-3.0%
2014	1302687	233228	707883	361576	1209402	162680	699971	346751	93285	70548	7912	14825
	-0.8%	12.3%	2.2%	-12.3%	-1.5%	13.3%	2.0%	-13.0%	10.3%	10.0%	19.2%	7.5%
2015	1718192	359316	876217	482659	1596977	263436	868734	464807	121215	95880	7483	17852
	31.9%	54.1%	23.8%	33.5%	32.0%	61.9%	24.1%	34.0%	29.9%	35.9%	-5.4%	20.4%
2016	1753763	404208	903420	446135	1628881	302136	897035	429710	124882	102072	6385	16425
	2.1%	12.5%	3.1%	-7.6%	2.0%	14.7%	3.3%	-7.6%	3.0%	6.5%	-14.7%	-8.0%

Regions	Accumulative Total	1985–2010	2011	2012	2013	2014	2015	2016
Accumulative Total (National)	19802035	5995367	1504670	1912151	2234560	2210616	2639446	3305225
Beijing	1153001	375853	77955	92305	123336	138111	156312	189129
Tianjin	539521	149209	38489	41009	60915	63422	79963	106514
Hebei	307301	109948	17595	23241	27619	30000	44060	54838
Shanxi	146624	47544	12769	16786	18859	15687	14948	20031
Inner Mongolia	67773	26905	3841	4732	6388	6359	8876	10672
Liaoning	497741	240875	37102	41152	45996	37860	42153	52603
Jilin	140998	67225	8196	9171	10751	11933	14800	18922
Heilongjiang	284227	96161	23432	30610	32264	31856	34611	35293
Shanghai	972493	421539	80215	82682	86450	81664	100006	119937
Jiangsu	3523503	835293	348381	472656	504500	421907	428337	512429
Zhejiang	2301993	619694	177066	249373	294014	261435	307264	393147
Anhui	728001	111783	48556	74888	93353	99160	127709	172552
Fujian	535425	135029	32325	42773	53701	58075	83146	130376
Jiangxi	209668	47575	9673	12458	16938	25594	36936	60494
Shandong	1405684	447551	109599	128614	155170	158619	193220	212911
Henan	514737	149823	34076	43442	55920	62434	74373	94669
Hubei	547257	174168	42510	51316	50816	59050	74240	95157
Hunan	418312	145277	29516	35709	41336	44194	54501	67779
Guangdong	2739610	909595	196272	229514	264265	278358	355939	505667
Guangxi	225756	45556	8106	13610	23251	32298	43696	59239
Chongqing	406750	89144	32039	38924	49036	55298	82791	59518
Sichuan	745245	202311	49734	66312	82453	91167	110746	142522
Guizhou	134615	31486	8351	11296	17405	22467	18295	25315
Yunnan	125824	43247	7150	9260	11512	13343	17603	23709
Tibet	3152	1247	263	170	203	248	309	712
Shaanxi	436818	102946	32227	43608	57287	56235	74904	69611
Gansu	95119	23715	5287	8261	10976	12020	14584	20276

Continued

Region	Accumulated Total	1985-2010	2011	2012	2013	2014	2015	2016
Qinghai	14812	4729	732	844	1099	1534	2590	3284
Ningxia	29680	9311	1079	1985	3230	3532	4394	6149
Xinjiang	85212	28643	4736	7044	8224	10210	12250	14105
Hainan	24138	9265	1489	1824	2359	2416	3127	3658
Hong Kong SAR	52282	31508	3171	3168	3322	3242	3319	4552
Macao SAR	1103	337	36	65	147	84	213	221
Taiwan, China	387660	260875	22702	23349	21465	20804	19231	19234
(Guangzhou)	447565	137240	28087	33439	39814	46380	63413	99192
(Changchun)	78934	28910	5391	6161	7113	7846	10182	13331
(Wuhan)	266284	88372	21879	24105	25680	27802	33620	44826
(Nanjing)	384498	77919	31130	42782	55135	56130	56141	65261
(Hangzhou)	458479	122227	40786	53889	58207	48695	60981	73694
(Xi'an)	338014	74590	27717	36983	47111	43849	61661	46103
(Jinan)	225389	76689	18581	23129	22583	23564	28985	31858
(Shenyang)	173263	80050	11906	12899	13190	15044	18112	22062
(Chengdu)	510463	124252	37466	48901	59370	64975	77538	97961
(Dalian)	168223	76578	16279	18171	21376	11215	10570	14034
(Xiamen)	109663	30509	8315	9962	11165	12854	16394	20464
(Harbin)	174109	49511	13013	17041	20224	22833	25502	25985
(Shenzhen)	812569	262051	63522	73169	80692	82321	105501	145313
(Qingdao)	342042	68475	19577	27004	48610	55160	63688	59528
(Ningbo)	494880	104774	47571	73647	83334	58531	58779	68244
(Xinjiang Production and Construction Corps)	7698	1064	571	709	870	933	1538	2013

Table 5 Number of Domestic Filings for Invention Patents, Utility Models and Industrial Designs in 2016

Regions	Total	Invention Patents	Utility Model	Industrial Design	Regions	Total	Invention Patents	Utility Model	Industrial Design
Accumulative Total (National)	3305225	1204981	1468295	631949	Shaanxi	712	176	410	126
Beijing	189129	104643	64496	19990	Gansu	69611	22565	27149	19897
Tianjin	106514	38153	63589	4772	Qinghai	20276	6114	10272	3890
Hebei	54838	14141	30253	10444	Ningxia	3284	1381	1569	334
Shanxi	20031	8208	10079	1744	Xinjiang	6149	2510	3329	310
Inner Mongolia	10672	2878	6401	1393	Hainan	14105	3598	7999	2508
Liaoning	52603	25561	22996	4046	Hong Kong SAR	19234	10283	7315	1636
Jilin	18922	7537	9647	1738	Macao SAR	4552	1278	1195	2079
Heilongjiang	35293	13177	18856	3260	Taiwan, China	221	38	33	150
Shanghai	119937	54339	51836	13762	(Guangzhou)	99192	31892	41517	25783
Jiangsu	512429	184632	192636	135161	(Changchun)	13331	5797	6522	1012
Zhejiang	393147	93254	199244	100649	(Wuhan)	44826	20643	20504	3679
Anhui	172552	95963	67031	9558	(Nanjing)	65261	31556	26170	7535
Fujian	130376	27041	78176	25159	(Hangzhou)	73694	25009	32256	16429
Jiangxi	60494	8202	32631	19661	(Xi'an)	46103	18569	18369	9165
Shandong	212911	88359	106100	18452	(Jinan)	31858	14669	15310	1879
Henan	94669	28582	51358	14729	(Shenyang)	22062	12289	8472	1301
Hubei	95157	43789	42181	9187	(Chengdu)	97961	39431	37261	21269
Hunan	67779	25524	29635	12620	(Dalian)	14034	7129	6042	863
Guangdong	505667	155581	203609	146477	(Xiamen)	20464	5511	10245	4708
Guangxi	59239	43078	11599	4562	(Harbin)	25985	11198	12646	2141
Chongqing	3658	1278	1854	526	(Shenzhen)	145313	56326	56881	32106
Sichuan	59518	19981	32099	7438	(Qingdao)	59528	34953	21009	3566
Guizhou	142522	54277	58088	30157	(Ningbo)	68244	19328	26388	22528
Yunnan	25315	10953	11081	3281	(Xinjiang Production and Construction Corps)	2013	637	1258	118
Tibet	23709	7907	13549	2253					

Countries/Regions	Accumulative Total	1985–2010	2011	2012	2013	2014	2015	2016
Total	1916070	1037114	128677	138498	142501	150627	159054	159599
Andorra	19	11	1	1	2	2	0	2
United Arab Emirates	310	142	20	11	33	27	22	55
Afghanistan	11	8	2	1	0	0	0	0
Antigua and Barbuda	11	8	3	0	0	0	0	0
Anguilla Islands	7	2	0	1	0	0	1	3
Armenia	9	4	1	0	0	2	1	1
Netherlands Antilles	331	294	6	8	7	6	6	4
Angola	1	0	0	0	0	1	0	0
Argentina	164	99	10	11	7	11	21	5
American Samoa	1	0	0	0	0	1	0	0
Austria	9799	4206	697	759	951	1062	1070	1054
Australia	13914	8480	867	957	876	919	888	927
Aruba Island	1	1	0	0	0	0	0	0
Azerbaijan	7	2	1	2	0	0	1	1
Bosnia and Herzegovina	2	0	0	0	1	0	0	1
Barbados	1210	415	106	99	152	178	135	125
Bangladesh	12	3	0	0	1	3	5	0
Belgium	9044	4702	669	693	698	732	745	805
Bulgaria	130	80	4	4	5	15	13	9
Bahrain	4	3	0	0	0	0	1	0
Burundi	1	1	0	0	0	0	0	0
Benin	1	0	1	0	0	0	0	0
Bermuda Islands	1290	566	121	129	155	134	102	83
Brunei Darussalam	99	69	6	8	5	9	2	0
Bolivia	1	1	0	0	0	0	0	0
Brazil	2135	1021	203	159	165	234	170	183
Bahamas	284	196	17	13	7	19	23	9
Belarus	28	28	0	0	0	0	0	0
Belize	110	38	2	4	14	17	22	13
Canada	16305	9032	1191	1352	1237	1183	1153	1157
Democratic Republic of the Congo	13	0	0	0	0	0	13	0
Central African Republic	2	2	0	0	0	0	0	0
Switzerland	52004	28076	3293	3545	3926	4276	4438	4450
Cook Islands	19	10	6	0	2	0	1	0

Continued

Countries/Regions	Accumulative Total	1985–2010	2011	2012	2013	2014	2015	2016
Chile	195	76	17	21	17	25	22	17
Cameroon	2	2	0	0	0	0	0	0
Colombia	87	40	7	10	6	6	8	10
Costa Rica	8	3	0	0	4	0	1	0
Czechslovakia	73	72	0	0	0	0	0	1
Serbia and Montenegro	2	2	0	0	0	0	0	0
Cuba	175	131	6	8	8	6	12	4
Kuġaċao	1	0	0	0	0	0	1	0
Cyprus	364	179	34	36	28	33	23	31
Czech Republic	1241	553	72	154	74	92	153	143
Germany	185363	92878	13096	14552	15925	16026	16245	16641
Denmark	12471	6501	937	884	1061	1025	1012	1051
Dominica	3	3	0	0	0	0	0	0
Dominican Republic	9	2	0	0	3	0	0	4
Algeria	7	4	0	2	0	0	1	0
Ecuador	18	7	3	2	1	3	2	0
Estonia	82	26	5	11	4	17	4	15
Egypt	59	27	7	15	1	0	5	4
West Sahara	1	1	0	0	0	0	0	0
Spain	6909	3750	525	548	533	497	515	541
Ethiopia	2	0	0	0	0	2	0	0
Finland	18062	10803	1076	1255	1222	1333	1225	1148
Fiji	10	10	0	0	0	0	0	0
Falklands Islands (Malvinas Islands)	1	1	0	0	0	0	0	0
France	70165	38447	4575	5128	5126	5460	5654	5775
United Kingdom	38369	22547	2275	2273	2455	2674	3032	3113
Grenada	1	1	0	0	0	0	0	0
Guernsey Islands	2	0	0	0	0	0	1	1
Georgia	16	8	0	1	0	0	4	3
Gibraltar	32	14	3	5	1	2	4	3
Greece	360	186	23	26	13	28	42	42
Guatemala	7	1	0	0	0	0	6	0
Honduras	1	1	0	0	0	0	0	0
Croatia	145	121	3	5	5	4	4	3
Haiti	1	1	0	0	0	0	0	0

Continued

Countries/Regions	Accumulative Total	1985–2010	2011	2012	2013	2014	2015	2016
Hungary	1013	767	55	36	33	32	48	42
Indonesia	256	168	26	16	13	8	12	13
Ireland	2458	1166	176	213	213	244	204	242
Israel	8013	3564	634	686	669	764	777	919
India	3382	1667	228	264	302	307	280	334
Iraq	12	2	1	2	2	0	3	2
Iran	62	16	3	0	1	0	14	28
Iceland	221	147	17	8	11	15	11	12
Italy	28555	16204	1815	2020	1992	1978	2116	2430
Jersey Island	11	7	0	0	0	1	2	1
Jamaica	5	0	0	3	0	1	1	0
Jordan	40	16	1	2	5	0	11	5
Japan	655510	372763	45228	49678	48537	47547	46606	45151
Kenya	7	0	2	2	1	0	1	1
Kyrgyzstan	5	4	0	1	0	0	0	0
Cambodia	2	0	0	0	0	0	2	0
Saint Kitts and Nevis	7	3	0	1	2	0	0	1
DPR Korea	25	19	0	3	2	1	0	0
Republic of Korea	165307	83787	9860	10793	12916	13994	16397	17560
Kuwait	17	11	2	1	2	0	0	1
Cayman Islands	12535	1368	691	805	699	1764	3416	3792
Kazakhstan	38	22	4	2	5	1	4	0
Lebanon	30	9	5	4	4	1	5	2
Liechtenstein	2072	1235	155	135	105	112	154	176
Sri Lanka	67	47	0	2	3	0	15	0
Liberia	3	3	0	0	0	0	0	0
Lesotho	1	1	0	0	0	0	0	0
Lithuania	34	5	1	3	3	10	5	7
Luxembourg	2529	915	215	187	227	324	313	348
Latvia	69	36	11	5	5	5	5	2
Morocco	58	15	2	2	2	0	35	2
Monaco	178	112	7	7	8	10	18	16
Republic of Moldova	6	2	0	1	0	3	0	0
Madagascar	3	2	0	0	0	0	0	1
Marshall Islands	15	4	2	1	2	3	3	0

Continued

Countries/Regions	Accumulative Total	1985-2010	2011	2012	2013	2014	2015	2016
FYR Macedonia	2	0	0	0	1	1	0	0
Mali	71	10	10	7	6	2	16	20
Myanmar	4	0	0	0	0	4	0	0
Mongolia	5	1	3	0	1	0	0	0
Malta	212	61	13	7	14	25	48	44
Mauritius	159	111	10	4	20	3	5	6
Maldives	2	2	0	0	0	0	0	0
Malawi	2	2	0	0	0	0	0	0
Mexico	685	286	53	51	49	127	85	34
Malaysia	1694	894	141	135	113	165	135	111
Namibia	2	2	0	0	0	0	0	0
Niger	1	1	0	0	0	0	0	0
Nigeria	19	8	0	0	5	4	0	2
Netherlands	55437	35771	3473	3035	2888	3324	3395	3551
Norway	3819	2263	275	262	268	271	257	223
Nepal	3	0	0	3	0	0	0	0
New Zealand	2089	1051	111	132	157	191	215	232
Oman	3	3	0	0	0	0	0	0
Panama	329	281	10	8	5	7	11	7
Peru	18	5	3	3	2	0	1	4
Papua New Guinea	2	0	0	0	0	0	2	0
Philippines	159	73	5	5	5	16	32	23
Pakistan	31	10	2	1	4	5	4	5
Poland	748	267	58	72	81	99	89	82
Puerto Rico	24	6	0	5	5	3	3	2
Portugal	381	185	28	22	32	27	32	55
Paraguay	4	1	0	0	0	1	0	2
Qatar	22	0	0	2	1	6	8	5
Romania	44	22	6	4	4	3	1	4
Serbia	13	4	1	0	5	1	2	0
Russian Federation	2776	1583	170	183	233	211	197	199
Saudi Arabia	1243	473	36	39	58	210	154	273
Seychelles	241	37	9	43	16	46	42	48
Sudan	2	1	0	0	0	0	1	0
Sweden	30284	17205	1963	1988	2119	2337	2211	2461

Continued

Countries/Regions	Accumulative Total	1985-2010	2011	2012	2013	2014	2015	2016
Singapore	7609	2959	645	651	680	696	875	1103
Slovenia	372	202	38	19	23	21	29	40
Slovakia	128	56	11	9	9	12	16	15
San Marino	22	16	2	1	0	0	0	3
Senegal	2	2	0	0	0	0	0	0
Salvador	2	1	1	0	0	0	0	0
Syria	6	3	0	0	0	1	2	0
Swaziland	1	1	0	0	0	0	0	0
Turks and Caicos Islands	1	0	0	1	0	0	0	0
Chad	2	0	1	0	0	0	1	0
Thailand	744	511	25	32	34	31	41	70
Tunisia	19	8	1	1	5	1	2	1
Turkey	1246	502	104	101	140	156	126	117
Trinidad and Tobago	5	5	0	0	0	0	0	0
Tanzania	2	0	0	0	2	0	0	0
Ukraine	170	77	10	11	22	23	14	13
Uganda	2	2	0	0	0	0	0	0
United States	474588	250577	32023	33556	34421	38997	43278	41736
Uruguay	31	17	5	0	0	0	5	4
Uzbekistan	11	5	1	0	1	3	0	1
Vatican	2	2	0	0	0	0	0	0
Saint Vincent and the Grenadines	9	3	1	1	1	1	2	0
Venezuela	64	47	1	6	0	5	4	1
Virgin Islands	4426	2328	286	386	443	270	318	395
Viet Nam	113	17	7	18	11	5	11	44
Vanuatu	12	12	0	0	0	0	0	0
Samoa	329	138	20	24	31	33	28	55
Yemen	7	3	1	0	1	0	0	2
Yugoslavia	39	39	0	0	0	0	0	0
South Africa	1488	967	82	94	90	94	87	74
Zambia	5	2	0	0	0	0	2	1
Zimbabwe	9	8	0	0	0	0	0	1
Albania	3	0	0	0	0	0	0	3
Cote D'ivoire	1	0	0	0	0	0	0	1
Eritrea	1	0	0	0	0	0	0	1

Regions	Accumulative Total	1985–2010	2011	2012	2013	2014	2015	2016
Accumulative Total (National)	11095232	3384472	883861	1163226	1228413	1209402	1596977	1628881
Beijing	611885	188545	40888	50511	62671	74661	94031	100578
Tianjin	222069	60022	13982	19782	24856	26351	37342	39734
Hebei	195907	69199	11119	15315	18186	20132	30130	31826
Shanxi	75751	26563	4974	7196	8565	8371	10020	10062
Inner Mongolia	40435	15854	2262	3084	3836	4031	5522	5846
Liaoning	252396	120530	19176	21223	21656	19525	25182	25104
Jilin	78944	36306	4920	5930	6219	6696	8878	9995
Heilongjiang	158577	53853	12236	20268	19819	15412	18943	18046
Shanghai	548541	225052	47960	51508	48680	50488	60623	64230
Jiangsu	1798142	407384	199814	269944	239645	200032	250290	231033
Zhejiang	1591320	425334	130190	188463	202350	188544	234983	221456
Anhui	344236	50983	32681	43321	48849	48380	59039	60983
Fujian	345372	88887	21857	30497	37511	37857	61621	67142
Jiangxi	119283	26314	5550	7985	9970	13831	24161	31472
Shandong	715380	235052	58844	75496	76976	72818	98101	98093
Henan	287538	81729	19259	26791	29482	33366	47766	49145
Hubei	258804	77641	19035	24475	28760	28290	38781	41822
Hunan	234491	76061	16064	23212	24392	26637	34075	34050
Guangdong	1707013	574411	128413	153598	170430	179953	241176	259032
Guangxi	82616	26335	4402	5900	7884	9664	13573	14858
Chongqing	219174	52493	15525	20364	24828	24312	38914	42738
Sichuan	415711	124358	28446	42218	46171	47120	64953	62445
Guizhou	69593	17586	3386	6059	7915	10107	14115	10425
Yunnan	75346	26676	4199	5853	6804	8124	11658	12032
Tibet	1820	835	142	133	121	146	198	245
Shaanxi	200357	48326	11662	14908	20836	22820	33350	48455
Gansu	43071	12305	2383	3662	4737	5097	6912	7975

Continued

Regions	Accumulative Total	1985-2010	2011	2012	2013	2014	2015	2016
Qinghai	7245	2485	538	527	502	619	1217	1357
Ningxia	14541	5907	613	844	1211	1424	1865	2677
Xinjiang	49218	17024	2642	3439	4998	5238	8761	7116
Hainan	13826	5040	765	1093	1331	1597	2061	1939
Hong Kong SAR	41301	25020	2588	2619	2297	2867	2940	2970
Macao SAR	719	205	19	26	93	55	142	179
Taiwan, China	274610	180157	17327	16982	15832	14837	15654	13821
(Guangzhou)	269041	85999	18339	22045	26192	28198	39883	48385
(Changchun)	42682	14190	3146	3884	4014	4406	5981	7061
(Wuhan)	145375	43155	11588	13689	15901	16335	21740	22967
(Nanjing)	165842	35343	12419	18584	19565	22910	28153	28868
(Hangzhou)	307931	75746	29075	40554	41511	33585	46320	41140
(Xi'an)	150514	31982	9274	11862	16250	17495	25372	38279
(Jinan)	116197	35377	11345	14264	12405	11760	15573	15473
(Shenyang)	85870	41515	5456	6752	6924	6661	9034	9528
(Chengdu)	281995	76859	21228	32533	33468	31935	44852	41120
(Dalian)	71435	28655	8115	7491	7316	5886	7181	6791
(Xiamen)	76201	21454	5485	7479	8248	8943	12474	12118
(Harbin)	85707	25334	6260	9788	10315	9284	12467	12259
(Shenzhen)	477867	139063	39363	48791	49785	53701	72126	75038
(Qingdao)	128822	36747	9085	12721	13861	14184	20176	22048
(Ningbo)	361227	76171	37309	59175	58406	43286	46088	40792
(Xinjiang Production and Construction Corps)	4336	604	307	437	479	526	930	1053

Table 8 Volume of Domestic Granted Invention Patents, Utility Models and Industrial Designs (2016)

Regions	Total	Invention Patents	Utility Model	Industrial Design	Regions	Total	Invention Patents	Utility Model	Industrial Design
Accumulative Total (National)	1628881	302136	897035	429710	Shaanxi	245	33	154	58
Beijing	100578	40602	44710	15266	Gansu	48455	7503	17084	23868
Tianjin	39734	5185	31046	3503	Qinghai	7975	1308	5075	1592
Hebei	31826	4247	19762	7817	Ningxia	1357	271	883	203
Shanxi	10062	2411	6532	1119	Xinjiang	2677	560	1947	170
Inner Mongolia	5846	871	3981	994	Hainan	7116	910	4828	1378
Liaoning	25104	6731	15515	2858	Hong Kong SAR	13821	6664	5744	1413
Jilin	9995	2428	6179	1388	Macao SAR	2970	630	747	1593
Heilongjiang	18046	4345	11707	1994	Taiwan, China	179	25	29	125
Shanghai	64230	20086	34101	10043	(Guangzhou)	48385	7669	22951	17765
Jiangsu	231033	40952	117827	72254	(Changchun)	7061	1980	4268	813
Zhejiang	221456	26576	123744	71136	(Wuhan)	22967	6514	13977	2476
Anhui	60983	15292	38773	6918	(Nanjing)	28868	8705	15695	4468
Fujian	67142	7170	42110	17862	(Hangzhou)	41140	8666	21816	10658
Jiangxi	31472	1914	17939	11619	(Xi'an)	38279	6686	12344	19249
Shandong	98093	19404	66068	12621	(Jinan)	15473	4503	9628	1342
Henan	49145	6811	32197	10137	(Shenyang)	9528	2853	5716	959
Hubei	41822	8517	27209	6096	(Chengdu)	41120	7190	19118	14812
Hunan	34050	6967	18452	8631	(Dalian)	6791	2309	3936	546
Guangdong	259032	38626	118157	102249	(Xiamen)	12118	2028	6752	3338
Guangxi	14858	5159	6535	3164	(Harbin)	12259	3695	7429	1135
Chongqing	1939	383	1171	385	(Shenzhen)	75038	17665	34338	23035
Sichuan	42738	5044	30428	7266	(Qingdao)	22048	6561	13159	2328
Guizhou	62445	10350	31813	20282	(Ningbo)	40792	5669	18193	16930
Yunnan	10425	2036	6525	1864	(Xinjiang Production and Construction Corps)	1053	170	809	74
Tibet	12032	2125	8063	1844					

Countries/Regions	Accumulated Total	1985–2010	2011	2012	2013	2014	2015	2016
Total	1105420	512887	76652	91912	84587	93285	121215	124882
Andorra	8	4	0	0	1	2	1	0
United Arab Emirates	208	119	4	10	12	29	19	15
Afghanistan	10	7	2	0	1	0	0	0
Antigua and Barbuda	7	5	0	0	1	1	0	0
Anguilla Islands	2	0	0	1	1	0	0	0
Armenia	5	2	0	0	0	1	0	2
Netherlands Antilles	221	173	11	10	10	4	9	4
Angola	1	0	0	0	0	1	0	0
Argentina	66	29	4	5	7	4	9	8
American Samoa	2	0	0	0	0	1	1	0
Austria	5493	2145	342	381	412	572	786	855
Australia	7906	4206	481	670	584	517	766	682
Azerbaijan	2	0	1	0	0	0	1	0
Barbados	637	98	39	67	64	85	128	156
Bangladesh	4	2	0	0	0	2	0	0
Belgium	5085	1974	395	537	494	445	612	628
Bulgaria	63	36	2	4	2	6	5	8
Bahrain	1	1	0	0	0	0	0	0
Benin	1	0	0	1	0	0	0	0
Bermuda Islands	612	165	83	112	91	74	50	37
Brunei Darussalam	86	47	10	8	3	6	11	1
Brazil	1191	478	77	114	99	148	156	119
Bahamas	193	107	10	9	11	17	22	17
Belarus	14	14	0	0	0	0	0	0
Belize	65	22	4	2	14	8	12	3
Canada	8472	3720	677	812	721	760	874	908
Democratic Republic of the Congo	13	0	0	0	0	0	6	7
Central African Republic	2	2	0	0	0	0	0	0
Switzerland	31272	14221	2041	2539	2293	2820	3424	3934
Cook Islands	20	12	6	0	1	1	0	0

Continued

Countries/Regions	Accumulated Total	1985-2010	2011	2012	2013	2014	2015	2016
Chile	76	21	4	2	9	14	15	11
Cameroon	1	0	0	1	0	0	0	0
Colombia	41	20	3	1	7	4	4	2
Costa Rica	2	1	0	0	0	1	0	0
Czechoslovakia	32	32	0	0	0	0	0	0
Cuba	103	55	5	11	12	9	7	4
Kulaçao	1	0	0	0	0	0	1	0
Cyprus	205	66	32	27	12	21	13	34
Czech Republic	958	426	59	110	80	70	124	89
Germany	104935	43295	7098	8702	8623	9440	13192	14585
Demark	7101	3107	468	574	629	698	821	804
Dominican Republic	7	3	0	1	0	2	1	0
Algeria	4	1	0	0	0	2	1	0
Ecuador	9	1	1	3	1	1	2	0
Estonia	41	10	2	3	2	8	10	6
Egypt	35	9	6	14	1	2	0	3
Spain	3885	1849	307	288	279	370	414	378
Ethiopia	2	0	0	0	0	1	1	0
Finland	10654	5374	679	939	790	809	1027	1036
Fiji	9	9	0	0	0	0	0	0
Falklands Islands (Malvinas Islands)	1	1	0	0	0	0	0	0
France	41952	19663	2528	3345	3475	3556	4441	4944
Gabon	2	2	0	0	0	0	0	0
United Kingdom	20728	10369	1271	1571	1520	1584	2191	2222
Georgia	9	4	0	0	0	1	0	4
Gibraltar	25	10	1	0	3	3	5	3
Greece	181	76	16	15	6	16	30	22
Guatemala	6	0	0	0	0	0	1	5
Honduras	1	1	0	0	0	0	0	0
Croatia	68	56	3	4	2	0	0	3
Haiti	1	1	0	0	0	0	0	0

Continued

Countries/Regions	Accumulated Total	1985-2010	2011	2012	2013	2014	2015	2016
Hungary	442	290	23	24	33	23	25	24
Indonesia	182	120	17	12	12	6	8	7
Ireland	1319	413	100	134	120	157	191	204
Israel	3423	1165	228	345	352	361	453	519
India	1622	673	86	113	118	157	241	234
Iraq	7	1	0	1	1	1	1	2
Iran	31	4	3	1	0	2	14	7
Iceland	136	43	15	16	19	20	10	13
Italy	18466	8879	1342	1542	1463	1538	1769	1933
Jersey Island	5	4	0	1	0	0	0	0
Jordan	19	8	0	3	0	0	3	5
Japan	424834	211003	30637	35403	29830	33955	43435	40571
Kenya	2	0	1	0	0	1	0	0
Kyrgyzstan	4	2	0	1	0	0	0	1
Saint Kitts and Nevis	2	0	0	0	1	1	0	0
DPR Korea	15	6	3	1	2	0	1	2
Republic of Korea	89144	42636	6631	6941	6031	6812	9421	10672
Kuwait	9	8	0	0	0	0	0	1
Cayman Islands	3113	459	223	223	247	268	724	969
Kazakhstan	22	10	2	7	1	1	1	0
Lebanon	19	6	2	2	3	0	4	2
Liechtenstein	1347	788	88	79	58	56	125	153
Sri Lanka	33	28	1	0	0	1	3	0
Liberia	3	3	0	0	0	0	0	0
Lesotho	1	1	0	0	0	0	0	0
Lithuania	13	2	0	3	0	6	1	1
Luxembourg	1521	471	62	175	144	178	233	258
Latvia	41	10	7	5	6	4	7	2
Morocco	53	8	4	1	4	0	35	1
Monaco	94	67	4	5	4	5	5	4
Republic of Moldova	2	0	0	0	0	1	1	0
Madagascar	2	2	0	0	0	0	0	0
Marshall Islands	6	0	1	1	0	0	3	1

Continued

Countries/Regions	Accumulated Total	1985-2010	2011	2012	2013	2014	2015	2016
Mali	17	1	1	2	0	1	5	7
Myanmar	4	0	0	0	0	0	4	0
Mongolia	8	5	0	0	1	1	0	1
Malta	103	13	7	11	16	14	9	33
Mauritius	137	77	8	20	5	6	10	11
Maldives	1	1	0	0	0	0	0	0
Mexico	437	110	31	49	46	53	110	38
Malaysia	1082	533	76	96	63	95	127	92
Namibia	1	1	0	0	0	0	0	0
Nigeria	14	5	0	0	1	4	3	1
Netherlands	30319	15603	2228	2440	2187	2304	2658	2899
Norway	2214	1076	146	177	173	185	238	219
Nepal	3	0	0	2	1	0	0	0
New Zealand	1056	466	61	79	92	88	131	139
Oman	1	1	0	0	0	0	0	0
Panama	276	191	19	26	19	6	7	8
Peru	5	1	0	0	2	1	1	0
Papua New Guinea	2	0	0	0	0	0	1	1
Philippines	90	44	5	1	0	9	13	18
Pakistan	17	6	0	0	0	3	4	4
Poland	389	126	36	43	28	46	44	66
Puerto Rico	7	2	0	1	1	0	3	0
Portugal	180	61	17	19	15	12	32	24
Paraguay	1	1	0	0	0	0	0	0
Qatar	8	0	0	0	1	2	2	3
Romania	23	11	1	5	2	0	2	2
Serbia	7	1	1	0	2	0	1	2
Russian Federation	1358	615	86	113	97	144	153	150
Saudi Arabia	690	348	19	26	34	27	59	177
Seychelles	128	17	2	7	9	21	36	36
Sweden	17836	8348	1250	1689	1465	1494	1777	1813
Singapore	3919	1432	306	403	334	370	489	585
Slovenia	213	83	18	18	14	25	31	24

Continued

Countries/Regions	Accumulated Total	1985-2010	2011	2012	2013	2014	2015	2016
Slovakia	80	36	5	8	3	4	9	15
San Marino	10	8	0	0	2	0	0	0
Senegal	1	1	0	0	0	0	0	0
Salvador	2	1	0	0	0	1	0	0
Syria	5	3	0	0	0	1	1	0
Swaziland	1	1	0	0	0	0	0	0
Turks and Caicos Islands	1	0	0	0	1	0	0	0
Thailand	500	357	17	16	20	26	27	37
Tunesia	3	3	0	0	0	0	0	0
Turkey	866	318	62	75	81	85	112	133
Trinidad and Tobago	5	1	0	3	0	0	0	1
Tanzania	2	0	0	0	0	2	0	0
Ukraine	92	38	2	4	8	16	12	12
Uganda	2	2	0	0	0	0	0	0
United States	240406	102059	15822	20160	20666	22040	28842	30817
Uruguay	14	8	0	2	0	3	0	1
Uzbekistan	6	3	0	1	0	0	2	0
Saint Vincent and the Grenadines	9	1	0	2	1	3	1	1
Venezuela	48	33	2	2	1	5	4	1
Virgin Islands	3068	1189	207	366	362	417	241	286
Viet Nam	60	6	4	12	15	2	6	15
Vanuatu	5	4	1	0	0	0	0	0
Samoa	189	70	10	18	22	31	21	17
Yemen	6	3	1	0	0	0	0	2
Yugoslavia	24	22	1	0	0	1	0	0
South Africa	789	376	48	84	75	67	79	60
Zambia	1	0	0	0	0	0	1	0
Zimbabwe	4	4	0	0	0	0	0	0
Jamaica	2	0	0	0	0	0	0	2
Bosnia and Herzegovina	1	0	0	0	0	0	0	1
Cote D'ivoire	1	0	0	0	0	0	0	1
Macedonie	1	0	0	0	0	0	0	1
Chad	1	0	0	0	0	0	0	1

Table 10 Valid Domestic Patents (by the end of 2016)

Regions	Total	Invention Patents	Utility Model	Industrial Design	Regions	Total	Invention Patents	Utility Model	Industrial Design
Accumulative Total (National)	5527183	1158203	3118410	1250570	Shaanxi	116270	27599	55903	32768
Beijing	417666	166722	203533	47411	Gansu	22593	5022	14398	3173
Tianjin	124443	22663	89667	12113	Qinghai	3962	904	2247	811
Hebei	105490	15755	68809	20926	Ningxia	7220	1680	4935	605
Shanxi	38702	9896	24638	4168	Xinjiang	24531	3762	16165	4604
Inner Mongolia	20007	3734	12936	3337	Hainan	7366	2394	3693	1279
Liaoning	101657	27915	63929	9813	Hong Kong SAR	15815	4626	4017	7172
Jilin	34101	9255	20395	4451	Macao SAR	511	90	141	280
Heilongjiang	61245	16137	38405	6703	Taiwan, China	104373	50261	45536	8576
Shanghai	285877	85049	160744	40084	(Guangzhou)	156488	30305	74664	51519
Jiangsu	740215	146859	419226	174130	(Changchun)	23427	6960	13821	2646
Zhejiang	732438	91373	410069	230996	(Wuhan)	84576	24460	52001	8115
Anhui	188240	39104	126067	23069	(Nanjing)	102454	33458	55887	13109
Fujian	197393	23793	118556	55044	(Hangzhou)	157097	36579	85384	35134
Jiangxi	73745	6896	42845	24004	(Xi'an)	92362	24368	43055	24939
Shandong	312937	62005	208963	41969	(Jinan)	54015	14628	34158	5229
Henan	148862	22601	100870	25391	(Shenyang)	35222	11108	20653	3461
Hubei	143802	31567	94161	18074	(Chengdu)	122951	25198	64161	33592
Hunan	122584	27863	70435	24286	(Dalian)	28933	9625	17050	2258
Guangdong	940138	168480	443368	328290	(Xiamen)	47788	7291	28288	12209
Guangxi	45928	14222	23297	8409	(Harbin)	40240	13372	23098	3770
Chongqing	116201	16737	76390	23074	(Shenzhen)	314978	95370	142125	77483
Sichuan	193737	36815	105859	51063	(Qingdao)	70631	18290	42186	10155
Guizhou	37562	7019	22725	7818	(Ningbo)	148940	18227	75945	54768
Yunnan	40583	9011	25196	6376	(Xinjiang Production and Construction Corps)	2937	570	2195	172
Tibet	989	394	292	303					

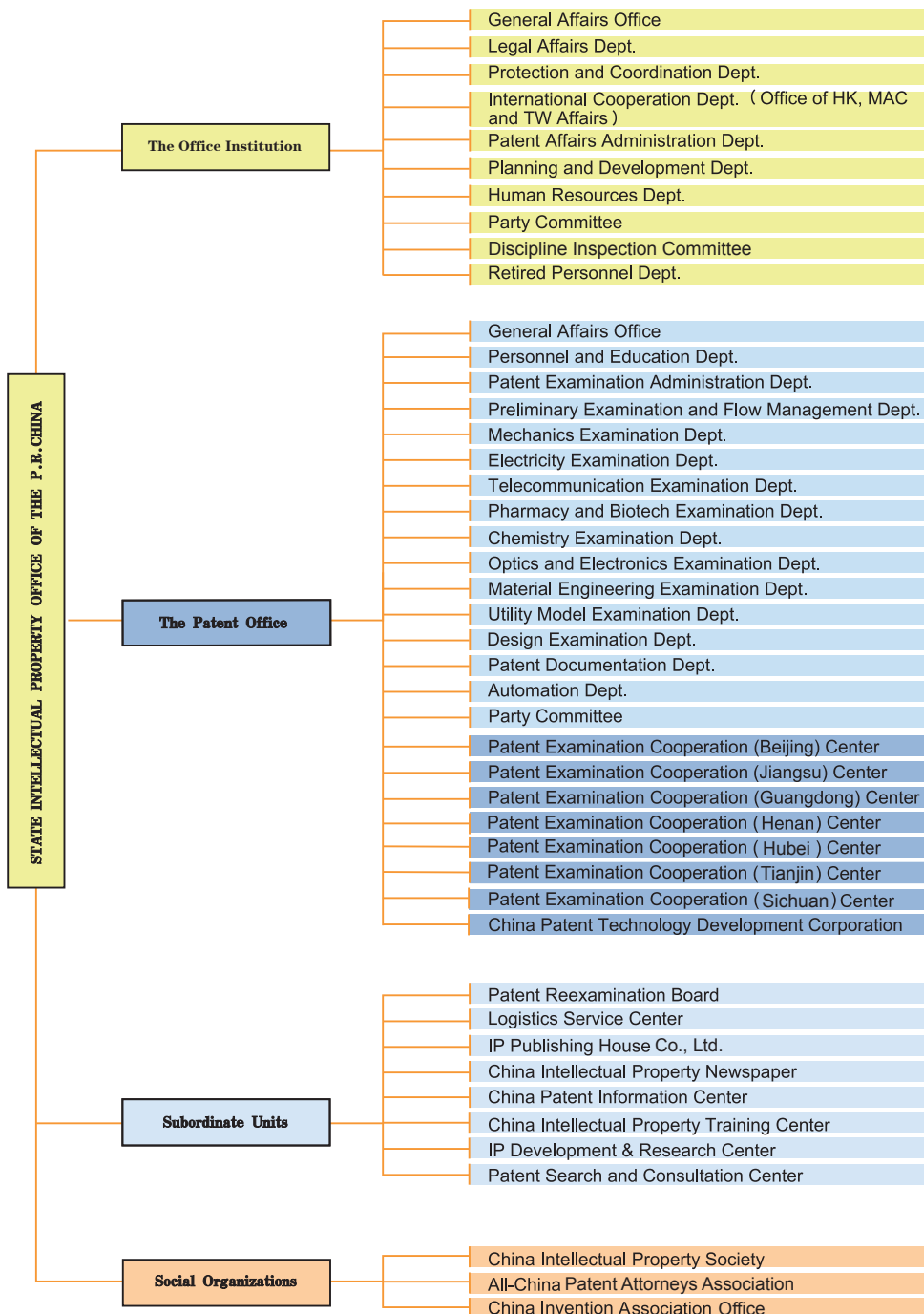
Table 11 Valid Foreign Patents (by the end of 2016)

Countries/ Regions	Total	Invention Patents	Utility Model	Industrial Design	Countries/ Regions	Total	Invention Patents	Utility Model	Industrial Design
Total	758055	614000	36075	107980	Kułaçao	1	1	0	0
Andorra	7	5	1	1	Cyprus	113	74	12	27
United Arab Emirates	89	30	12	47	Czech Republic	536	114	50	372
Afghanistan	3	0	0	3	Germany	77055	62203	3677	11175
Antigua and Barbuda	7	4	0	3	Denmark	4838	3751	156	931
Anguilla Islands	1	0	1	0	Dominican Republic	2	2	0	0
Armenia	3	2	0	1	Algeria	3	1	0	2
Netherlands Antilles	59	58	1	0	Ecuador	7	3	0	4
Angola	1	0	0	1	Estonia	28	17	1	10
Argentina	37	28	4	5	Egypt	13	5	1	7
American Samoa	4	1	2	1	Spain	2140	1221	106	813
Austria	4045	3364	193	488	Ethiopia	2	0	1	1
Australia	4113	2644	249	1220	Finland	7286	6067	348	871
Azerbaijan	2	2	0	0	France	28687	22954	1298	4435
Bosnia and Herzegovina	2	1	0	1	United Kingdom	12252	8685	524	3043
Barbados	663	569	9	85	Georgia	5	1	0	4
Bangladesh	2	0	1	1	Gibraltar	23	19	1	3
Belgium	3733	3210	112	411	Greece	126	73	1	52
Bulgaria	32	21	3	8	Guatemala	6	0	0	6
Bahrain	3	3	0	0	Croatia	11	9	1	1
Benin	0	0	0	0	Hungary	174	148	9	17
Bermuda Islands	421	272	64	85	Indonesia	62	19	6	37
Brunei Darussalam	29	15	11	3	Ireland	1145	1036	36	73
Brazil	779	438	56	285	Israel	2424	1842	203	379
Bahamas	115	104	1	10	Isle of Man	1	1	0	0
Belize	44	4	31	9	India	1043	872	34	137
Canada	5884	4709	227	948	Iraq	6	0	4	2
Democratic Republic of the Congo	13	0	0	13	Iran	23	3	1	19
Switzerland	22151	16696	1160	4295	Iceland	90	88	1	1
Cook Islands	19	3	1	15	Italy	11329	7506	446	3377
Chile	60	57	2	1	Jersey Island	3	3	0	0
Cameroon	1	1	0	0	Jordan	8	3	0	5
Colombia	23	17	2	4	Japan	285255	238910	13584	32761
Costa Rica	1	0	0	1	Kenya	1	1	0	0
Cuba	72	72	0	0	Kyrgyzstan	1	1	0	0
					Saint Kitts and Nevis	2	2	0	0
					DPR Korea	6	4	2	0

Continued

Countries/ Regions	Total	Invention Patents	Utility Model	Industrial Design	Countries/ Regions	Total	Invention Patents	Utility Model	Industrial Design
Republic of Korea	61667	47090	1966	12611	Qatar	9	5	0	4
Kuwait	4	2	0	2	Romania	7	4	2	1
Cayman Islands	3308	1998	245	1065	Serbia	5	5	0	0
Kazakhstan	14	10	4	0	Russian Federation	687	445	121	121
Lebanon	11	4	2	5	Saudi Arabia	444	292	6	146
Saint Lucia	1	1	0	0	Seychelles	129	55	43	31
Liechtenstein	691	481	7	203	Sweden	12475	10396	335	1744
Sri Lanka	5	4	0	1	Singapore	2921	2037	309	575
Lithuania	12	2	2	8	Slovenia	123	101	0	22
Luxembourg	1543	1133	83	327	Slovakia	41	19	1	21
Latvia	25	18	1	6	San Marino	0	0	0	0
Morocco	45	8	0	37	Salvador	2	2	0	0
Monaco	43	35	2	6	Syria	1	0	0	1
Republic of Moldova	1	0	0	1	Turks and Caicos Islands	0	0	0	0
Madagascar	2	2	0	0	Thailand	228	72	21	135
Marshall Islands	5	3	2	0	Tunesia	1	1	0	0
Mali	15	3	5	7	Turkey	590	299	33	258
Myanmar	4	0	0	4	Trinidad and Tobago	4	3	0	1
Mongolia	2	2	0	0	Tanzania	0	0	0	0
Malta	113	97	9	7	Ukraine	48	25	11	12
Mauritius	132	119	3	10	United States	170211	140947	9134	20130
Mexico	364	242	6	116	Uruguay	6	6	0	0
Malaysia	603	250	74	279	Uzbekistan	3	3	0	0
Nigeria	4	0	0	4	Saint Vencent and the Grenadines	2	2	0	0
Netherlands	18782	16146	406	2230	Venezuela	25	23	0	2
Norway	1393	1185	34	174	Virgin Islands	1983	972	359	652
Nepal	3	0	2	1	Viet Nam	35	9	1	25
New Zealand	683	430	43	210	Samoa	325	190	105	30
Oman	0	0	0	0	Yemen	3	0	0	3
Panama	150	115	5	30	Yugoslavia	2	2	0	0
Peru	4	2	2	0	South Africa	488	418	13	57
Papua New Guinea	2	0	0	2	Zambia	1	0	1	0
Philippines	86	60	12	14	Jamaica	2	2	0	0
Pakistan	11	3	3	5	Cote D'ivoire	1	0	0	1
Poland	273	162	13	98	Macedonia	1	1	0	0
Puerto Rico	6	3	1	2	Republic of Chad	1	0	1	0
Portugal	119	85	1	33					

2. Organization Chart



Chief Editor:	He Zhimin	Liao Tao		
Deputy Chief Editor:	Wu Kai	Hu Wenhui	Liu Jian	Zhao Zhibin
Executive Editor:	Feng Xianping	Xu Haiyan	Xu Bin	Zhang Zhanchao
	Yang Fei			
Editor:	Duan Hongmei	Shi Longhui		
Editor for Statistics:	Liu Lei			
Compiling Editor:	Zhang Keyi			
Contributing Editor:	Chen Huiting	Liu Qilong	Wang Yanhong	Liu Feng
	Wu Yun	Gu Yunfei	Chen Junzhu	Wang Xiaofei
	Zhang Daqi	Yan Nan	Chen Xianyi	Zhang Yongjian
	Lou Ning	Li Fenlian	Zhao Hui	Li Mu
Photographer:	Wang Wenyang	Zhang Zihong	Jiang Wenjie	
Printing:	Electronic Plate-making & Printing Center, Intellectual Property Publishing House			

ADD: P. O.Box 8020 / No.6 Xitucheng Road, Haidian District, Beijing, 100088, P. R. China
 Tel: 86-10-62083268 / Fax: 86-10-62019615 / <http://www.sipo.gov.cn>